

Product datasheet for PH315425

NR2E3 (NM_014249) Human Mass Spec Standard

Product data:

Product Type:	Mass Spec Standards
Description:	NR2E3 MS Standard C13 and N15-labeled recombinant protein (NP_055064)
Species:	Human
Expression Host:	HEK293
Expression cDNA Clone or AA Sequence:	RC215425
Predicted MW:	44.5 kDa
Protein Sequence:	>RC215425 representing NM_014249 Red=Cloning site Green=Tags(s)

METRPTALMSSTVAAAAPAAGAASRKESPGRWGLGEDPTGVSPSLQCRVCGDSSSGKHYGIYACNGCSGF
FKRSVRRRLIYRCQVGAGMCPVDKAHRNQCACRLKKCLQAGMNQDAVQNERQPRSTAQVHLDSMESNTE
SRPESLVAPPAPAGRSRPGTPMSAARALGHHFMSLITAETCAKLEPEDADENIDVTSNDPEFPSSPYS
SSSPCGLDSIHETSARLLFMVAVKAKNLPVFSSLPFRDQVILLEEAWSELFLGAIQWSLPLDSCPLLAP
PEASAAGGAQGRLTLASMETRVLQETISRFRALAVDPTEFACMKALVLFKPETRGLKDPEHVEALQDQSQ
VMLSQHSKAHHPSPVRFGKLLLLLPSLRFITAERIELLFFRKTIGNTPMEKLLCDMFKN

SGPTRTRRLEQKLI SEEDLAANDILDYKDDDDKV

Tag:	C-Myc/DDK
Purity:	> 80% as determined by SDS-PAGE and Coomassie blue staining
Concentration:	>0.05 µg/µL as determined by microplate BCA method
Labeling Method:	Labeled with [U- ¹³ C ₆ , ¹⁵ N ₄]-L-Arginine and [U- ¹³ C ₆ , ¹⁵ N ₂]-L-Lysine
Buffer:	25 mM Tris-HCl, 100 mM glycine, pH 7.3
Storage:	Store at -80°C. Avoid repeated freeze-thaw cycles.
Stability:	Stable for 3 months from receipt of products under proper storage and handling conditions.
RefSeq:	NP_055064
RefSeq Size:	1999
RefSeq ORF:	1230
Synonyms:	ESCS; PNR; rd7; RNR; RP37
Locus ID:	10002



[View online »](#)

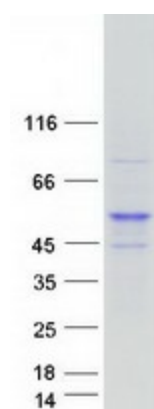
UniProt ID: [Q9Y5X4](#)

Cytogenetics: 15q23

Summary: This protein is part of a large family of nuclear receptor transcription factors involved in signaling pathways. Nuclear receptors have been shown to regulate pathways involved in embryonic development, as well as in maintenance of proper cell function in adults. Members of this family are characterized by discrete domains that function in DNA and ligand binding. This gene encodes a retinal nuclear receptor that is a ligand-dependent transcription factor. Defects in this gene are a cause of enhanced S cone syndrome. Alternatively spliced transcript variants encoding different isoforms have been identified. [provided by RefSeq, Jul 2008]

Protein Families: Druggable Genome, Nuclear Hormone Receptor, Transcription Factors

Product images:



Coomassie blue staining of purified NR2E3 protein (Cat# [TP315425]). The protein was produced from HEK293T cells transfected with NR2E3 cDNA clone (Cat# [RC215425]) using MegaTran 2.0 (Cat# [TT210002]).