

## Product datasheet for PH315414

### TMPPE (NM\_001039770) Human Mass Spec Standard

#### Product data:

Product Type:	Mass Spec Standards
Description:	TMPPE MS Standard C13 and N15-labeled recombinant protein (NP_001034859)
Species:	Human
Expression Host:	HEK293
Expression cDNA Clone or AA Sequence:	RC215414
Predicted MW:	49.3 kDa
Protein Sequence:	>RC215414 representing NM_001039770 Red=Cloning site Green=Tags(s)

MAIFRQLSLGAKATLAAVTVFVSMIASRSYLAESLELRARWLLRLQLALFVNSLLLIGSLYIWRSTVSN  
LCHSPAESTCFQLWKVVVLAFLALAHSSFFTMFFLVAEEPFLSLAAYSCLGAYIIMLFFLILSGMEQ  
AYQLLAWRSGRVVGSLKTRKLVLRPALAVGVTAVLSVAGILNAAQPPAVKTVEVPIHQLPASMNNLKIV  
LLSDIHLGPTVGRKMEMFVRMVNVLEPDITVIVGDLSDSEASVLRATAVAPLQGLHSHLGAYFVTGNHEY  
YTSDVSNWFALLESLHVQPLHNENVKISATRAQRGGGGSGSGSEDEDWICLAGVDDIEADILHYSGHGMD  
LDKALEGCSPDHTIILLAHQPLAAKRALQARPDINLILSGHAGQIFPLNVAAYLLNPFFAGLYQVAQA  
TFVYVSPGTAYYGIPMRLGSRAEITELILQRSP

TRTRPLEQKLISEEDLAANDILDYKDDDDKV

Tag:	C-Myc/DDK
Purity:	> 80% as determined by SDS-PAGE and Coomassie blue staining
Concentration:	>0.05 µg/µL as determined by microplate BCA method
Labeling Method:	Labeled with [U- <sup>13</sup> C <sub>6</sub> , <sup>15</sup> N <sub>4</sub> ]-L-Arginine and [U- <sup>13</sup> C <sub>6</sub> , <sup>15</sup> N <sub>2</sub> ]-L-Lysine
Buffer:	25 mM Tris-HCl, 100 mM glycine, pH 7.3
Storage:	Store at -80°C. Avoid repeated freeze-thaw cycles.
Stability:	Stable for 3 months from receipt of products under proper storage and handling conditions.
RefSeq:	<u><a href="#">NP_001034859</a></u>
RefSeq Size:	3962
RefSeq ORF:	1359
Locus ID:	643853



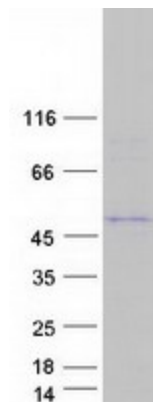
[View online »](#)

UniProt ID: [Q6ZT21](#)

Cytogenetics: 3p22.3

Protein Families: Transmembrane

### Product images:



Coomassie blue staining of purified TMPPE protein (Cat# [TP315414]). The protein was produced from HEK293T cells transfected with TMPPE cDNA clone (Cat# [RC215414]) using MegaTran 2.0 (Cat# [TT210002]).