

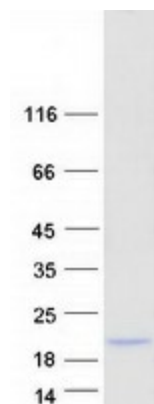
## Product datasheet for PH315358

### LOC401052 (NM\_001008737) Human Mass Spec Standard

#### Product data:

Product Type:	Mass Spec Standards
Description:	LOC401052 MS Standard C13 and N15-labeled recombinant protein (NP_001008737)
Species:	Human
Expression Host:	HEK293
Expression cDNA Clone or AA Sequence:	RC215358
Predicted MW:	12.7 kDa
Protein Sequence:	<p>&gt;RC215358 representing NM_001008737</p> <p>Red=Cloning site Green=Tags(s)</p> <p>MSAIWRLLAAGDEQAKVARPACRPRAAAVSCHQSPDTQDAQLTQKHSYVRPLRGSASCHCYQKKKPSK            QKGQCHTRQPGAQQNKWPPKALWGPHPATDPSTVWFPGLDPPGDLSA</p> <p>TRTRPLEQKLISEEDLAANDILDYKDDDDKV</p>
Tag:	C-Myc/DDK
Purity:	> 80% as determined by SDS-PAGE and Coomassie blue staining
Concentration:	>0.05 µg/µL as determined by microplate BCA method
Labeling Method:	Labeled with [U- 13C6, 15N4]-L-Arginine and [U- 13C6, 15N2]-L-Lysine
Buffer:	25 mM Tris-HCl, 100 mM glycine, pH 7.3
Storage:	Store at -80°C. Avoid repeated freeze-thaw cycles.
Stability:	Stable for 3 months from receipt of products under proper storage and handling conditions.
RefSeq:	<a href="#">NP_001008737</a>
RefSeq Size:	1897
RefSeq ORF:	354
Locus ID:	401052
Cytogenetics:	3p25.3


[View online »](#)

**Product images:**

Coomassie blue staining of purified LOC401052 protein (Cat# [TP315358]). The protein was produced from HEK293T cells transfected with LOC401052 cDNA clone (Cat# [RC215358]) using MegaTran 2.0 (Cat# [TT210002]).