

Product datasheet for PH315354

nkx6.3 (NKX6-3) (NM_152568) Human Mass Spec Standard

Product data:

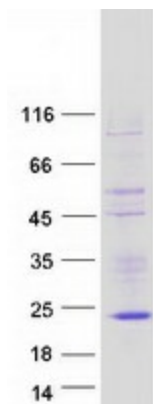
Product Type:	Mass Spec Standards
Description:	NKX6 MS Standard C13 and N15-labeled recombinant protein (NP_689781)
Species:	Human
Expression Host:	HEK293
Expression cDNA Clone or AA Sequence:	RC215354
Predicted MW:	14.1 kDa
Protein Sequence:	>RC215354 representing NM_152568 Red=Cloning site Green=Tags(s) MQQGQLAPGSRLCSGPWGLPELQPAAPSSSAAQLPWGESWGEEADTPACL SASGVWFQNRRTKWRKKSAL EPSSTPRAPGGAGAGAGGDRAPSENEDEYNKPLDPDSDEKIRLLLRKHRAAFSVLSLGAHSV TRTRPLEQKLISEEDLAANDILDYKDDDDKV
Tag:	C-Myc/DDK
Purity:	> 80% as determined by SDS-PAGE and Coomassie blue staining
Concentration:	>0.05 µg/µL as determined by microplate BCA method
Labeling Method:	Labeled with [U- 13C6, 15N4]-L-Arginine and [U- 13C6, 15N2]-L-Lysine
Buffer:	25 mM Tris-HCl, 100 mM glycine, pH 7.3
Storage:	Store at -80°C. Avoid repeated freeze-thaw cycles.
Stability:	Stable for 3 months from receipt of products under proper storage and handling conditions.
RefSeq:	NP_689781
RefSeq Size:	1640
RefSeq ORF:	405
Synonyms:	NKX6.3
Locus ID:	157848
UniProt ID:	A6NJ46
Cytogenetics:	8p11.21



[View online »](#)

Summary:

The NKX family of homeodomain proteins controls numerous developmental processes. Members of the NKX6 subfamily, including NKX6-3, are involved in development of the central nervous system (CNS), gastrointestinal tract, and pancreas (Alanentalo et al., 2006 [PubMed 16326147]).[supplied by OMIM, Mar 2008]

Product images:

Coomassie blue staining of purified NKX6-3 protein (Cat# [TP315354]). The protein was produced from HEK293T cells transfected with NKX6-3 cDNA clone (Cat# [RC215354]) using MegaTran 2.0 (Cat# [TT210002]).