

Product datasheet for PH315304

C20orf118 (TLDC2) (NM_080628) Human Mass Spec Standard

Product data:

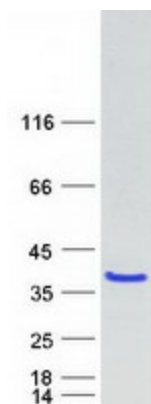
Product Type:	Mass Spec Standards
Description:	C20orf118 MS Standard C13 and N15-labeled recombinant protein (NP_542195)
Species:	Human
Expression Host:	HEK293
Expression cDNA Clone or AA Sequence:	RC215304
Predicted MW:	23.9 kDa
Protein Sequence:	>RC215304 protein sequence Red=Cloning site Green=Tags(s) MRGLRWRYTRLPSQVEDTLSGEEGNEEEEEAAAPDPAAPEDPTVPQLTEASQVLSASEIRQLSFHFPP RVTGHPWSLVFCTSRDGFSLQSLYRRMEGCSGPVLLVLRDQDQGQIFGAFSSSAIRLSKGFYGTGETFLFS FSPQLKVFKWTGSNSFFVKGDLSLMMGSGSRFGLWLDGDLFRGGSSPCPTFNNEVLARQEQFCIQELE AWLLS TRTRPLEQKLISEEDLAANDILDYKDDDDKV
Tag:	C-Myc/DDK
Purity:	> 80% as determined by SDS-PAGE and Coomassie blue staining
Concentration:	>0.05 µg/µL as determined by microplate BCA method
Labeling Method:	Labeled with [U- 13C6, 15N4]-L-Arginine and [U- 13C6, 15N2]-L-Lysine
Buffer:	25 mM Tris-HCl, 100 mM glycine, pH 7.3
Storage:	Store at -80°C. Avoid repeated freeze-thaw cycles.
Stability:	Stable for 3 months from receipt of products under proper storage and handling conditions.
RefSeq:	NP_542195
RefSeq Size:	2041
RefSeq ORF:	645
Synonyms:	C20orf118
Locus ID:	140711
UniProt ID:	A0PIX2



[View online »](#)

Cytogenetics: 20q11.23

Product images:



Coomassie blue staining of purified TLDC2 protein (Cat# [TP315304]). The protein was produced from HEK293T cells transfected with TLDC2 cDNA clone (Cat# [RC215304]) using MegaTran 2.0 (Cat# [TT210002]).