

Product datasheet for PH315293

TLR5 (NM_003268) Human Mass Spec Standard

Product data:

Product Type:	Mass Spec Standards
Description:	TLR5 MS Standard C13 and N15-labeled recombinant protein (NP_003259)
Species:	Human
Expression Host:	HEK293
Expression cDNA Clone or AA Sequence:	RC215293
Predicted MW:	97.77 kDa
Protein Sequence:	>RC215293 representing NM_003268 Red=Cloning site Green=Tags(s)
	<p>MGDHLDLLLGVLMAGPVFGIPSCSFDGRIAFYRFCNLTQVPQVLNTERLLLSFNRYIRTVTASSFPFLE QLLLELGSQYTPLTIDKEAFRNLPNLRILDLGSSKIYFLHPDAFQGLFHLFELRLYFCGLSDAVLKDGY FRNLKALTRLDL SKNQIRSLYLHPSFGKLNLSKSIDFSSNQIFLVCEHELEPLQGKTL SFFSLAANSLYS RVSVDWGKCMNPF RNMVLEILDVSGNGWTV DITGNFSNAISKSQAFSLILAHHIMGAGFGFHNKIDPDQN TFAGLARSSVRHLDL SHGFVFSLSNRV FETLKD LKVLNLAYNKINKIADEAFYGLDNLQVLNL SYNLLGE LYSSNFYGLPKVAYIDLQKNHIAIQDQTFKFLKQLTDLDRDNALTTIHFIPSPIDIFLSGNKLVTLPK INLTANLIHLSENRL ENLDILYFLLRVPHLQILILNQNRFS SCSGDQTPSENPSLEQLFLGENMLQLAWE TELCWDVFEGLSHLQVLYLNHNYLNSLPPGVF SHLTALRGLSLNSNRLTVL SHNDLPANLEILDISRNL LAPNPDV FVSLSVLDITHNKFICECELS TFINWLNHTNVTIAGPPADIYCVYPD SLSGVSLFSLSTEGCD EEEVLKSLKFSLFIVCTVTLTFLMTILTVTKFRGFCFCICYKTAQRLVFKDHPQGT EPMYKYDAYLCFS SKDFTWVQNALLKHLDTQYSDQNRFNLCFEERDFVPGENRIANIQDAIWNSRKIVCLVSRHFLRDGWCLE AFSYAQGRCLSDLNSALIMVVVGSLSQYQLMKHQSIIRGFVQKQQYLRWPEDLQDVGWFLHKLSSQILKKE KEKKKDNNIPLQTVATIS</p> <p>TRTRPLEQKLI SEEDLAANDILDYKDDDDKV</p>
Tag:	C-Myc/DDK
Purity:	> 80% as determined by SDS-PAGE and Coomassie blue staining
Concentration:	>0.05 µg/µL as determined by microplate BCA method
Labeling Method:	Labeled with [U- ¹³ C ₆ , ¹⁵ N ₄]-L-Arginine and [U- ¹³ C ₆ , ¹⁵ N ₂]-L-Lysine
Buffer:	25 mM Tris-HCl, 100 mM glycine, pH 7.3
Storage:	Store at -80°C. Avoid repeated freeze-thaw cycles.
Stability:	Stable for 3 months from receipt of products under proper storage and handling conditions.



[View online »](#)

RefSeq: [NP_003259](#)

RefSeq Size: 3369

RefSeq ORF: 2574

Synonyms: MELIOS; SLE1; SLEB1; TIL3

Locus ID: 7100

UniProt ID: [O60602](#), [A0A2R8Y7Z4](#)

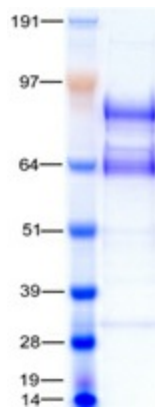
Cytogenetics: 1q41

Summary: This gene encodes a member of the toll-like receptor (TLR) family, which plays a fundamental role in pathogen recognition and activation of innate immune responses. These receptors recognize distinct pathogen-associated molecular patterns that are expressed on infectious agents. The protein encoded by this gene recognizes bacterial flagellin, the principal component of bacterial flagella and a virulence factor. The activation of this receptor mobilizes the nuclear factor NF-kappaB, which in turn activates a host of inflammatory-related target genes. Mutations in this gene have been associated with both resistance and susceptibility to systemic lupus erythematosus, and susceptibility to Legionnaire disease. [provided by RefSeq, Dec 2009]

Protein Families: Druggable Genome, Transmembrane

Protein Pathways: Pathogenic Escherichia coli infection, Toll-like receptor signaling pathway

Product images:



Coomassie blue staining of purified TLR5 protein (Cat# [TP315293]). The protein was produced from HEK293T cells transfected with TLR5 cDNA clone (Cat# [RC215293]) using MegaTran 2.0 (Cat# [TT210002]).