

Product datasheet for PH315281

IGFL1 (NM_198541) Human Mass Spec Standard

Product data:

Product Type:	Mass Spec Standards
Description:	IGFL1 MS Standard C13 and N15-labeled recombinant protein (NP_940943)
Species:	Human
Expression Host:	HEK293
Expression cDNA Clone or AA Sequence:	RC215281
Predicted MW:	12.2 kDa
Protein Sequence:	>RC215281 representing NM_198541 Red=Cloning site Green=Tags(s) MAPRGCI VAVFAIFCISRL LCSHGAPVAPMTPYLMLCQPHKRCGDKFYDPLQHCCYDDAVVPLARTQTCG NCTFRVCFEQCCPWTFMVKLINQNCDSARTSDDR LCRSVS TRTRPLEQKLISEEDLAANDILDYKDDDDKV
Tag:	C-Myc/DDK
Purity:	> 80% as determined by SDS-PAGE and Coomassie blue staining
Concentration:	>0.05 µg/µL as determined by microplate BCA method
Labeling Method:	Labeled with [U- 13C6, 15N4]-L-Arginine and [U- 13C6, 15N2]-L-Lysine
Buffer:	25 mM Tris-HCl, 100 mM glycine, pH 7.3
Storage:	Store at -80°C. Avoid repeated freeze-thaw cycles.
Stability:	Stable for 3 months from receipt of products under proper storage and handling conditions.
RefSeq:	NP_940943
RefSeq Size:	771
RefSeq ORF:	330
Synonyms:	APRG644; UNQ644
Locus ID:	374918
UniProt ID:	Q6UW32
Cytogenetics:	19q13.32



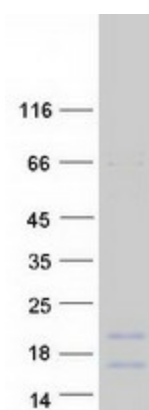
[View online »](#)

Summary:

The protein encoded by this gene is a member of the insulin-like growth factor family of signaling molecules. The encoded protein is synthesized as a precursor protein and is proteolytically cleaved to form a secreted mature peptide. The mature peptide binds to a receptor, which in mouse was found on the cell surface of T cells. Increased expression of this gene may be linked to psoriasis. [provided by RefSeq, Aug 2016]

Protein Families:

Secreted Protein, Transmembrane

Product images:

Coomassie blue staining of purified IGFL1 protein (Cat# [TP315281]). The protein was produced from HEK293T cells transfected with IGFL1 cDNA clone (Cat# [RC215281]) using MegaTran 2.0 (Cat# [TT210002]).