

Product datasheet for PH315251

Tenascin C (TNC) (NM_002160) Human Mass Spec Standard

Product data:

Product Type:	Mass Spec Standards
Description:	TNC MS Standard C13 and N15-labeled recombinant protein (NP_002151)
Species:	Human
Expression Host:	HEK293
Expression cDNA Clone or AA Sequence:	RC215251
Predicted MW:	240.91 kDa



[View online »](#)

Protein Sequence: >RC215251 representing NM_002160
 Red=Cloning site Green=Tags(s)

MGAMTQLLAGVFLAFLALATEGGVLKVKIRHKRQSGVNTLPEENQPVVFNHVNLIKLPVGSQCSVDLES
 ASGEKDLAPPSEPSFQEHTVDGENQIVFTHRINIPRRACGCAAAPDVKELLSRLEENLVSSLREQC
 TAGAGCCLQPATGRLDTRPFCSGRGNFSTEGCGCVCEPGWKGPNCSEPECPGNCHLRGRCIDGQCICDDG
 FTGEDCSQLACPSDCNDQKCVNGVICIFEGYAGADCSREICPVPCSEEHGTCVDGLCVCHDGFAGDDCN
 KPLCLNNCYNRGRVCVENEVCVDEGFTGEDCSELICPNDCFDRGRCINGTCYCEEFTGEDCGKPTCPHAC
 HTQGRCEEQCVCEGFAVDCSEKRCPADCHNRGRVDRCECDGFTGADCGELKCPNGCSGHGRVCN
 GQVCVDEGYTGEDCSQLRCPNDCHSRGRVCEGKCVCEQGFQGYDCSDMSPNDCHQHGRVNGMVCVDDG
 YTGEDCRDRQCPDRCSNRGLCVDGQVCEDGFTGPDCAELSCPNDCHGRGRVNGQVCHEGFMGDKCE
 QRCPSDCHGQGRVVDGQICHEGFTGLDCGQHSCPSDCNNLQCVSGRCICNEGYSGEDCSEVSPPKDLV
 VTEVTEETVNLAWDNEMRVTEYL VVYTPTHEGGLEMQFRVPGDQTSTIIRELEPGVEYFIRVFAILENKK
 SIPVSARVATYLPAPGLKFKSIKETSVEVEWPLDIAFETWEIIFRNMNKEDEGEITKSLRRPETSQRQ
 TGLAPGQEYELSHIVKNNTRGPGKRVTTTRLDAPSQIEVKDVTDTTALITWFKPLAEIDGIELTYGIK
 DYPGDRTTIDLTEENQYSIGNLKPDEYVSLISRRGMSSNPAKETFTTGLDAPRNLRRVSQTNSIT
 LEWRNGKAAIDSYRIKYAPISGGDHAEDVDPKSSQATTKTTLTGLRPGTEYIGVSAVKEDKESNPATIN
 AATELDTPKDLQVSETAETSLTLLWKTPLAKFDRYRLNYSLPTGQWVGVLPRNTTSYVLRGLEPGQEYN
 VLLTAEKGRHKSAPARVKAQTEAPELENLTVTEVGDGLRLNWTAAADQAYEHFIQVQEAANKVEAARNL
 TVPGLSRAVDIPGLKAATPYTVSIYGVIGYRTPVLSAEASTGETPNLGEVVVAEVDALKNWTAPEG
 AYEYFFIQVQEAADTVEAAQNLVTPGGLRSTDLPLGLKAATHYITIRGVTQDFSTTPLSVEVLTVEVPDMG
 NLTVTEVSWDALRLNWTTPDGTQDFTIQVQEAQVVEAHNLVTPGSLRSMIEPGLRAGTPYTVTLHGEV
 RGHSTRPLAVEVVTEDLPQLGDLAVSEVGDGLRLNWTAAADNAYEHFVIQVQEVNKEAAQNLTLPGSLR
 AVDIPGLEAATPYRVSIVYGVIRGYRTPVLSAEASTAKEPEIGNLVSDITPESFNLVSWMATDGFIFFTI
 EIIDSNRLLLETVEYNISGAERTAHISGLPPSTDFIVYLSGLAPSIRTKTISATATTEALPLENLTISDI
 NPYGFTVSWMASENAFDSFLVTVVDSGKLLDPQEFVLSGTQRKLELRGLITGIGYEVMSGFTQGHQTKP
 LRAEIVTEAEPEVDNLLVSDATPDGFRLSWTADEGVDFNFKIRDTKKQSEPLEITLLAPERTDRLTGL
 REATEYEIELYGISKGRSQTVSAIATTAMGSPKEVIFSDITENSATVSWRAPTAQVESFRITYVPIGG
 TPSMVTVDGKTQTRLVKLIPGVEYLVSIAMKGFEESEPVSGSFTTALDGPGLVTANITDSEALARWQ
 PAIATVDSYVISYTGKVEITRTVSGNTVEYALTDLEPATEYTLRIFAEGKPKSSTITAKFTTDLDSP
 RDLTATEVQSETALLTWRPPRASVTGYLLVYVESVDGTVKEVIVGPDTTSSYSLADLSPSTHYTAKIQALNG
 PLRSNMIQTIFTTIGLLYFPKDCSQAMNGDTSGLYTIYLNQDKAQALEVFCDMTSDGGGWIVFLRRK
 NGENFYQNWKAYAAGFGDRREEFWLGLDNLNKITAQQQYELRVDLRDHGETAFVYDKFSVGDATRYK
 LKVEGYSGTAGDSMAYHNGRSFSTFDKDTSDAITNCALS YKGAFWYRNCHRVNLMGRYGDNNHSQGVNWF
 HWKGHEHSIQFAEMKLRPSNFRNLEGRKRA

TRTRPLEQKLISEEDLAANDILDYKDDDDKV

Tag: C-Myc/DDK

Purity: > 80% as determined by SDS-PAGE and Coomassie blue staining

Concentration: >0.05 µg/µL as determined by microplate BCA method

Labeling Method: Labeled with [U- 13C6, 15N4]-L-Arginine and [U- 13C6, 15N2]-L-Lysine

Buffer: 25 mM Tris-HCl, 100 mM glycine, pH 7.3

Storage: Store at -80°C. Avoid repeated freeze-thaw cycles.

Stability: Stable for 3 months from receipt of products under proper storage and handling conditions.

RefSeq: [NP_002151](#)

RefSeq Size: 7560

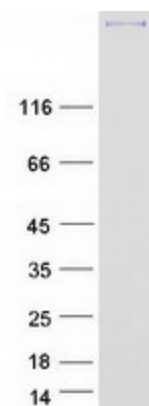
RefSeq ORF: 6603
Synonyms: 150-225; DFNA56; GMEM; GP; HXB; JI; TN; TN-C
Locus ID: 3371
UniProt ID: [P24821](#), [B4E1W8](#), [Q4LE33](#)
Cytogenetics: 9q33.1

Summary: This gene encodes an extracellular matrix protein with a spatially and temporally restricted tissue distribution. This protein is homohexameric with disulfide-linked subunits, and contains multiple EGF-like and fibronectin type-III domains. It is implicated in guidance of migrating neurons as well as axons during development, synaptic plasticity, and neuronal regeneration. [provided by RefSeq, Jul 2011]

Protein Families: Druggable Genome, ES Cell Differentiation/IPS, Secreted Protein, Transmembrane

Protein Pathways: ECM-receptor interaction, Focal adhesion

Product images:



Coomassie blue staining of purified TNC protein (Cat# [TP315251]). The protein was produced from HEK293T cells transfected with TNC cDNA clone (Cat# [RC215251]) using MegaTran 2.0 (Cat# [TT210002]).