

## Product datasheet for PH315235

### IL21 (NM\_021803) Human Mass Spec Standard

#### Product data:

Product Type:	Mass Spec Standards
Description:	IL21 MS Standard C13 and N15-labeled recombinant protein (NP_068575)
Species:	Human
Expression Host:	HEK293
Expression cDNA Clone or AA Sequence:	RC215235
Predicted MW:	18.5 kDa
Protein Sequence:	>RC215235 representing NM_021803 Red=Cloning site Green=Tags(s)  MRSSPGNMERIVICLMVIFLGTLVHKSSSQGQDRHMIRMRLIDIVDQLKNYVNDLVPEFLPAPEDVETN CEWSAFSCFQKAQLKSANTGNNERIINVSIIKLRKPPSTNAGRQKHRLTCPSCDSYEKKPPKEFLERF KSLQKMIHQHLSRTHGSEDS  TRTRPLEQKLISEEDLAANDILDYKDDDDKV
Tag:	C-Myc/DDK
Purity:	> 80% as determined by SDS-PAGE and Coomassie blue staining
Concentration:	>0.05 µg/µL as determined by microplate BCA method
Labeling Method:	Labeled with [U- 13C6, 15N4]-L-Arginine and [U- 13C6, 15N2]-L-Lysine
Buffer:	25 mM Tris-HCl, 100 mM glycine, pH 7.3
Storage:	Store at -80°C. Avoid repeated freeze-thaw cycles.
Stability:	Stable for 3 months from receipt of products under proper storage and handling conditions.
RefSeq:	<a href="#">NP_068575</a>
RefSeq Size:	642
RefSeq ORF:	486
Synonyms:	CVID11; IL-21; Za11
Locus ID:	59067
UniProt ID:	<a href="#">Q9HBE4</a> , <a href="#">A0A224B028</a>



[View online »](#)

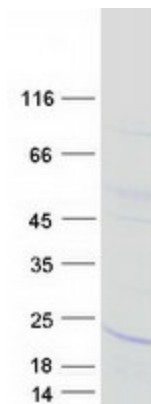
**Cytogenetics:** 4q27

**Summary:** This gene encodes a member of the common-gamma chain family of cytokines with immunoregulatory activity. The encoded protein plays a role in both the innate and adaptive immune responses by inducing the differentiation, proliferation and activity of multiple target cells including macrophages, natural killer cells, B cells and cytotoxic T cells. Dysregulation of this gene plays a role in multiple immune-mediated diseases including lupus, psoriasis and chronic inflammatory diseases. Alternatively spliced transcript variants encoding multiple isoforms have been observed for this gene. [provided by RefSeq, Dec 2011]

**Protein Families:** Druggable Genome, Secreted Protein

**Protein Pathways:** Cytokine-cytokine receptor interaction, Jak-STAT signaling pathway

### Product images:



Coomassie blue staining of purified IL21 protein (Cat# [TP315235]). The protein was produced from HEK293T cells transfected with IL21 cDNA clone (Cat# [RC215235]) using MegaTran 2.0 (Cat# [TT210002]).