

Product datasheet for PH315223

FECH (NM_001012515) Human Mass Spec Standard

Product data:

Product Type:	Mass Spec Standards
Description:	FECH MS Standard C13 and N15-labeled recombinant protein (NP_001012533)
Species:	Human
Expression Host:	HEK293
Expression cDNA Clone or AA Sequence:	RC215223
Predicted MW:	48.63 kDa
Protein Sequence:	>RC215223 representing NM_001012515 Red=Cloning site Green=Tags(s)

MRS LGANMAAALRAAGVLLRDPLASSSWRVCQPWRWKSGAAAAVTTETAQHAQGAKPQVQPQKRYESNI
RKPKTGILMLNMGGPETLGDVHDFLLRLFLDRDLMTLP IQNKLAPFIAKRRTPKIQEQYRRIGGGSPIKI
WTSKQEGEMVKLLDELS PNTAPHKYYIGFRYVHPL TEEAIEEMERDGLERAIAFTQYPQYSCSTTGS SLN
AIYRYYNQVGRKPTMKWSTIDRWPTHLLIQCFADHILKELDHFPLEKRSEVVILFSAHSLPMSVVNRGD
PYPQEVSATVQKVMERLEYCNPYRLVWQSKVGPMPWLG PQTDES IKGLCERGRKNILLVPIAFTSDHIET
LYELDIEYSQVLAKECGVENIRRAESLNGNPLFSKALADLVHSHIQSNELCSKQLT LSCPLCVNPVCRET
KSFFTSQQL

TRTRPLEQKLI SEEDLAANDILDYKDDDDKV

Tag:	C-Myc/DDK
Purity:	> 80% as determined by SDS-PAGE and Coomassie blue staining
Concentration:	>0.05 µg/µL as determined by microplate BCA method
Labeling Method:	Labeled with [U- ¹³ C ₆ , ¹⁵ N ₄]-L-Arginine and [U- ¹³ C ₆ , ¹⁵ N ₂]-L-Lysine
Buffer:	25 mM Tris-HCl, 100 mM glycine, pH 7.3
Storage:	Store at -80°C. Avoid repeated freeze-thaw cycles.
Stability:	Stable for 3 months from receipt of products under proper storage and handling conditions.
RefSeq:	<u>NP_001012533</u>
RefSeq Size:	3835
RefSeq ORF:	1287
Synonyms:	EPP; EPP1; FCE



[View online »](#)

Locus ID: 2235

UniProt ID: [P22830](#), [Q7KZA3](#)

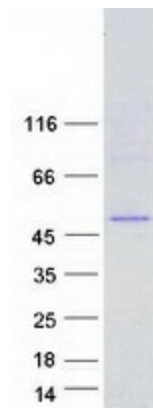
Cytogenetics: 18q21.31

Summary: The protein encoded by this gene is localized to the mitochondrion, where it catalyzes the insertion of the ferrous form of iron into protoporphyrin IX in the heme synthesis pathway. Mutations in this gene are associated with erythropoietic protoporphyria. Two transcript variants encoding different isoforms have been found for this gene. A pseudogene of this gene is found on chromosome 3.[provided by RefSeq, May 2010]

Protein Families: Druggable Genome

Protein Pathways: Metabolic pathways, Porphyrin and chlorophyll metabolism

Product images:



Coomassie blue staining of purified FECH protein (Cat# [TP315223]). The protein was produced from HEK293T cells transfected with FECH cDNA clone (Cat# [RC215223]) using MegaTran 2.0 (Cat# [TT210002]).