

## Product datasheet for PH315203

### ETS1 (NM\_005238) Human Mass Spec Standard

#### Product data:

Product Type:	Mass Spec Standards
Description:	ETS1 MS Standard C13 and N15-labeled recombinant protein (NP_005229)
Species:	Human
Expression Host:	HEK293
Expression cDNA Clone or AA Sequence:	RC215203
Predicted MW:	50.2 kDa
Protein Sequence:	>RC215203 representing NM_005238 Red=Cloning site Green=Tags(s)
	MKAAVDLKPTLTIIKTEKVDLELFPSPDMECADVPLLTPSSKEMMSQALKATFSGFTKEQQLGIPKDPR QWTETHVRDWMWAVNEFSLKGVDFQKFCMNGAALCALGKDCFLELAPDFVGDILWEHLEILQKEDVKPY QVNGVNPAYPESRYTSDYFISYGIEHAQCVPPSEFSEPSFITESYQTLHPISSEELLSLKYENDYPSVIL RDPLQDTLQNDYFAIKQEVVTPDNMCMGRTSRGKLGQDSFESIESYDSCDRLTQSWSSQSSFNSLQRV PSYDSFDSEDPAAALPNHKPKGTFKDYVRDRADLNKDKPVIPAAALAGYTGSGPIQLWQFLELLTDKSC QSFISWTGDGWEFKLSDPDEVARRWGKRKNPKMNYEKL SRGLRYYYYDKNIIHKTAGKRYVYRFVCDLQS LLGYTPEELHAML DVKPDAD E
	TRTRPLEQKLI SEEDLAANDILDYKDDDDKV
Tag:	C-Myc/DDK
Purity:	> 80% as determined by SDS-PAGE and Coomassie blue staining
Concentration:	>0.05 µg/µL as determined by microplate BCA method
Labeling Method:	Labeled with [U- 13C6, 15N4]-L-Arginine and [U- 13C6, 15N2]-L-Lysine
Buffer:	25 mM Tris-HCl, 100 mM glycine, pH 7.3
Storage:	Store at -80°C. Avoid repeated freeze-thaw cycles.
Stability:	Stable for 3 months from receipt of products under proper storage and handling conditions.
RefSeq:	<u><a href="#">NP_005229</a></u>
RefSeq Size:	5228
RefSeq ORF:	1323
Synonyms:	c-ets-1; ETS-1; EWSR2; p54



[View online »](#)

Locus ID: 2113

UniProt ID: [P14921](#), [B4DW78](#)

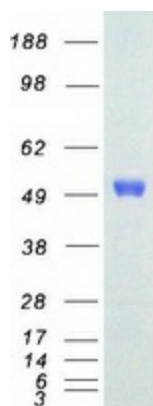
Cytogenetics: 11q24.3

**Summary:** This gene encodes a member of the ETS family of transcription factors, which are defined by the presence of a conserved ETS DNA-binding domain that recognizes the core consensus DNA sequence GGAA/T in target genes. These proteins function either as transcriptional activators or repressors of numerous genes, and are involved in stem cell development, cell senescence and death, and tumorigenesis. Alternatively spliced transcript variants encoding different isoforms have been described for this gene.[provided by RefSeq, Jul 2011]

**Protein Families:** Druggable Genome, Transcription Factors

**Protein Pathways:** Dorso-ventral axis formation, Pathways in cancer, Renal cell carcinoma

### Product images:



Coomassie blue staining of purified ETS1 protein (Cat# [TP315203]). The protein was produced from HEK293T cells transfected with ETS1 cDNA clone (Cat# [RC215203]) using MegaTran 2.0 (Cat# [TT210002]).