

## Product datasheet for PH315200

### SAPCD1 (NM\_001039651) Human Mass Spec Standard

#### Product data:

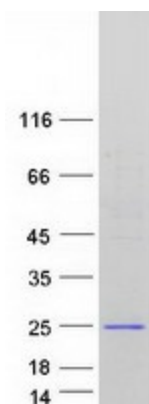
Product Type:	Mass Spec Standards
Description:	C6orf26 MS Standard C13 and N15-labeled recombinant protein (NP_001034740)
Species:	Human
Expression Host:	HEK293
Expression cDNA Clone or AA Sequence:	RC215200
Predicted MW:	20 kDa
Protein Sequence:	>RC215200 representing NM_001039651 Red=Cloning site Green=Tags(s)  MGSQSGGVPLVQAPYTVLLLPLGTSRQDPGAQSFFLWLRMQALEREQDALWQGLELLQHQAQWFDHL REAQRQQLHLGALGENFLDLHSEPRPLAQIQVNICLQNLIHEKFSPSPLNKASSCTTQDSKERRRE QNLWQQQELSRQQKGVTPKEEMAQRGCTKGPRGPTRV  TRTRPLEQKLI SEEDLAANDILDYKDDDDKV
Tag:	C-Myc/DDK
Purity:	> 80% as determined by SDS-PAGE and Coomassie blue staining
Concentration:	>0.05 µg/µL as determined by microplate BCA method
Labeling Method:	Labeled with [U- 13C6, 15N4]-L-Arginine and [U- 13C6, 15N2]-L-Lysine
Buffer:	25 mM Tris-HCl, 100 mM glycine, pH 7.3
Storage:	Store at -80°C. Avoid repeated freeze-thaw cycles.
Stability:	Stable for 3 months from receipt of products under proper storage and handling conditions.
RefSeq:	<a href="#">NP_001034740</a>
RefSeq Size:	917
RefSeq ORF:	534
Synonyms:	C6orf26; NG23
Locus ID:	401251
UniProt ID:	<a href="#">Q5SSQ6</a> , <a href="#">A0A1U9X8I8</a>



[View online »](#)

Cytogenetics: 6p21.33

### Product images:



Coomassie blue staining of purified SAPCD1 protein (Cat# [TP315200]). The protein was produced from HEK293T cells transfected with SAPCD1 cDNA clone (Cat# [RC215200]) using MegaTran 2.0 (Cat# [TT210002]).