

Product datasheet for PH315133

Cadherin like 23 (CDH23) (NM_052836) Human Mass Spec Standard

Product data:

Product Type:	Mass Spec Standards
Description:	CDH23 MS Standard C13 and N15-labeled recombinant protein (NP_443068)
Species:	Human
Expression Host:	HEK293
Expression cDNA Clone or AA Sequence:	RC215133
Predicted MW:	58.4 kDa
Protein Sequence:	>RC215133 representing NM_052836 Red=Cloning site Green=Tags(s)

MGRHVATSCHVAWLLVLIISGCGVQVNRLPFFTNHFFDITYLLISEDTPVGSSVTQLLAQDMDNDPLVFGVS
GEEASRFFAVEPDTGVVWLRQPLDRETKSEFTVEFVSVDHQGVITRKVNIQVGDVNDNAPTFFHNQPYSVR
IPENTPVGTPIFIVNATDPLDLAGGGSVLYSFQPPSQFFAIDSARGIVTVIRELDYETTQAYQLTVNATDQ
DKTRPLSTLANLAIITDVQMDPIFINLPYSTNIYEHSPPGTTVRIITAIDQDKGRPRGIGYTIIVSGNT
NSIFALDYISGVLTLNGLLDRENPLYSHGFILTVKGTENDDRTPSDATVTTTFNILDINDNAPEFNS
SEYSVAITELAQVGFALPLFIQVVDKDENLGLNSMFEVYLVGNNSHHFII SPTSVQ GKADIRIRVAIPLD
YETVDRYDFDLFANESVPDHVGYAKVKITLINENDNRPIFSQPLYNISLYENVTVGTSVLTVLVSPRFTA
GPLSSPGPTVVRHPEGFCPRDLSNQGRRHPQIPELCLLVY

TRTRPLEQKLI SEEDLAANDILDYKDDDDKV

Tag:	C-Myc/DDK
Purity:	> 80% as determined by SDS-PAGE and Coomassie blue staining
Concentration:	>0.05 µg/µL as determined by microplate BCA method
Labeling Method:	Labeled with [U- ¹³ C ₆ , ¹⁵ N ₄]-L-Arginine and [U- ¹³ C ₆ , ¹⁵ N ₂]-L-Lysine
Buffer:	25 mM Tris-HCl, 100 mM glycine, pH 7.3
Storage:	Store at -80°C. Avoid repeated freeze-thaw cycles.
Stability:	Stable for 3 months from receipt of products under proper storage and handling conditions.
RefSeq:	NP_443068
RefSeq Size:	2022
RefSeq ORF:	1590



[View online »](#)

Synonyms: CDHR23; PITA5; USH1D

Locus ID: 64072

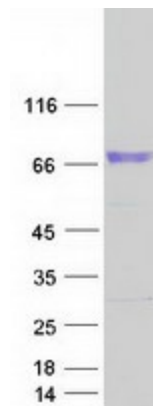
UniProt ID: [Q9H251](#)

Cytogenetics: 10q22.1

Summary: This gene is a member of the cadherin superfamily, whose genes encode calcium dependent cell-cell adhesion glycoproteins. The encoded protein is thought to be involved in stereocilia organization and hair bundle formation. The gene is located in a region containing the human deafness loci DFNB12 and USH1D. Usher syndrome 1D and nonsyndromic autosomal recessive deafness DFNB12 are caused by allelic mutations of this cadherin-like gene. Upregulation of this gene may also be associated with breast cancer. Alternative splice variants encoding different isoforms have been described. [provided by RefSeq, May 2013]

Protein Families: Transmembrane

Product images:



Coomassie blue staining of purified CDH23 protein (Cat# [TP315133]). The protein was produced from HEK293T cells transfected with CDH23 cDNA clone (Cat# [RC215133]) using MegaTran 2.0 (Cat# [TT210002]).