

Product datasheet for PH315130

Adenylate Kinase 1 (AK1) (NM_000476) Human Mass Spec Standard

Product data:

Product Type:	Mass Spec Standards
Description:	AK1 MS Standard C13 and N15-labeled recombinant protein (NP_000467)
Species:	Human
Expression Host:	HEK293
Expression cDNA Clone or AA Sequence:	RC215130
Predicted MW:	21.5 kDa
Protein Sequence:	>RC215130 representing NM_000476 Red =Cloning site Green =Tags(s) MEEKLKKTKIIFVVGPGSGKGTQCEKIVQKYGYTHLSTGDLLRSEVSSGSARGKKLSEIMEKGQLVPLE TVLDMLRDAMVAKVNTSKGFLIDGYPREVQQGEEFERRIGQPTLLLYVDAGPETMTQRLKRGETSGRVD DNEETIKRLETTYKATEPVIAFYEKRGIVRKVNAEGSVDSVFSQVCTHLDALK TR TRPLEQKLISEEDLAANDILDYKDDDDKV
Tag:	C-Myc/DDK
Purity:	> 80% as determined by SDS-PAGE and Coomassie blue staining
Concentration:	>0.05 µg/µL as determined by microplate BCA method
Labeling Method:	Labeled with [U- ¹³ C ₆ , ¹⁵ N ₄]-L-Arginine and [U- ¹³ C ₆ , ¹⁵ N ₂]-L-Lysine
Buffer:	25 mM Tris-HCl, 100 mM glycine, pH 7.3
Storage:	Store at -80°C. Avoid repeated freeze-thaw cycles.
Stability:	Stable for 3 months from receipt of products under proper storage and handling conditions.
RefSeq:	NP_000467
RefSeq Size:	2271
RefSeq ORF:	582
Synonyms:	HTL-S-58j
Locus ID:	203
UniProt ID:	P00568 , Q6FGX9



[View online »](#)

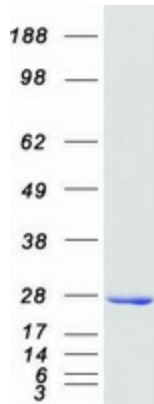
Cytogenetics: 9q34.11

Summary: This gene encodes an adenylate kinase enzyme involved in energy metabolism and homeostasis of cellular adenine nucleotide ratios in different intracellular compartments. This gene is highly expressed in skeletal muscle, brain and erythrocytes. Certain mutations in this gene resulting in a functionally inadequate enzyme are associated with a rare genetic disorder causing nonspherocytic hemolytic anemia. Alternative splicing of this gene results in multiple transcript variants encoding different isoforms. [provided by RefSeq, Dec 2015]

Protein Families: Druggable Genome

Protein Pathways: Metabolic pathways, Purine metabolism

Product images:



Coomassie blue staining of purified AK1 protein (Cat# [TP315130]). The protein was produced from HEK293T cells transfected with AK1 cDNA clone (Cat# [RC215130]) using MegaTran 2.0 (Cat# [TT210002]).