

Product datasheet for PH315118

SEC14L3 (NM_174975) Human Mass Spec Standard

Product data:

Product Type:	Mass Spec Standards
Description:	SEC14L3 MS Standard C13 and N15-labeled recombinant protein (NP_777635)
Species:	Human
Expression Host:	HEK293
Expression cDNA Clone or AA Sequence:	RC215118
Predicted MW:	46.1 kDa
Protein Sequence:	>RC215118 protein sequence Red=Cloning site Green=Tags(s)

MSGRVGDLSPKQAETLAKFRENVDVLPALPNPDDYFLLRRLRARNFDLQKSEALLRKYMEFRKTMIDIH
ILDWQPPEVIQKYMPGGLCGYDRDGCPVWYDIIGPLDPKGLLFSVTKQDLLKTKMRDCERILHECDLQTE
RLGKKIETIVMIFDCEGLGKHFVKPLVEVYQEFFGLLEENYPETLKFMLIVKATKLFVGVNLMKPFSL
EDTRRKIIVLGNWKEGLLKLISPEELPAQFGGTLTDPDGNPKCLTKINYGGEIPKSMYVRDQVKTQYEH
SVQINRGSSHQVEYEILFPGCVLRWQFSSDGADIGFVFLKTKMGERQRAGEMTEVLPSSQRYNAHMVPED
GNLTCSEAGVYVLRFDNTYSFVHAKKVSFTVEVLLPDEGMQKYDKELTPV

TRTRPLEQKLISEEDLAANDILDYKDDDDKV

Tag:	C-Myc/DDK
Purity:	> 80% as determined by SDS-PAGE and Coomassie blue staining
Concentration:	>0.05 µg/µL as determined by microplate BCA method
Labeling Method:	Labeled with [U- ¹³ C ₆ , ¹⁵ N ₄]-L-Arginine and [U- ¹³ C ₆ , ¹⁵ N ₂]-L-Lysine
Buffer:	25 mM Tris-HCl, 100 mM glycine, pH 7.3
Storage:	Store at -80°C. Avoid repeated freeze-thaw cycles.
Stability:	Stable for 3 months from receipt of products under proper storage and handling conditions.
RefSeq:	<u>NP_777635</u>
RefSeq Size:	2089
RefSeq ORF:	1200
Synonyms:	TAP2
Locus ID:	266629



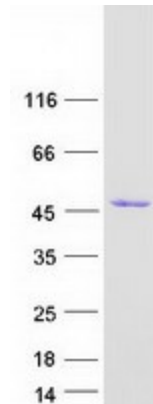
[View online »](#)

UniProt ID: [Q9UDX4, Q6XC17](#)

Cytogenetics: 22q12.2

Summary: The protein encoded by this gene is highly similar to the protein encoded by the *Saccharomyces cerevisiae* SEC14 gene. The SEC14 protein is a phosphatidylinositol transfer protein that is essential for biogenesis of Golgi-derived transport vesicles, and thus is required for the export of yeast secretory proteins from the Golgi complex. The specific function of this protein has not yet been determined. Alternatively spliced transcript variants encoding multiple isoforms have been observed for this gene. [provided by RefSeq, Jul 2012]

Product images:



Coomassie blue staining of purified SEC14L3 protein (Cat# [TP315118]). The protein was produced from HEK293T cells transfected with SEC14L3 cDNA clone (Cat# [RC215118]) using MegaTran 2.0 (Cat# [TT210002]).