

## Product datasheet for PH315079

### ATG7 (NM\_006395) Human Mass Spec Standard

#### Product data:

|                                       |  |
|---------------------------------------|--|
| Product Type:                         | Mass Spec Standards  |
| Description:                          | ATG7 MS Standard C13 and N15-labeled recombinant protein (NP_006386)   |
| Species:                              | Human  |
| Expression Host:                      | HEK293   |
| Expression cDNA Clone or AA Sequence: | RC215079   |
| Predicted MW:                         | 77.8 kDa   |
| Protein Sequence:                     | >RC215079 representing NM_006395<br>Red=Cloning site Green=Tags(s)   |
|                                       | <p>MAAATGDPGLSKLQFAPFSSALDVGFWHELTQKKLNEYRLDEAPKDIKGYYYNGDSAGLPARLTLEFSAF<br/>DMSAPTPARCCPAIGTLYNTNTLESFKTADKKLLLEQAANEIWESIKSGTALENPVLLNKFLLLTFADLK<br/>KYHFYYWFCYPALCLPESLPLIQGPVGLDQRFSLKQIEALECAYDNLCCQTEGVTALPYFLIKYDENMVLV<br/>SLLKHYSDFQQRKTIIGVYDPCNLAQYPGWPLRNFLVLAHRWSSSFQSVEVVCFRDRTMQGARDVA<br/>HSIIFEVKLPEMAFSPDCPKAVGWEKNQKGGMGRMVNLSECMDPKRLAESSVDLNLKLMCWRLVPTLDL<br/>DKVVSVKCLLLGAGTLGCNVARTLMGWGVRHITFVDNAKISYSNPVRQPLYEFEDCLGGGKPKALAAADR<br/>LQKIFPGVNARGFNMSIPMPGHPVNFSSVTLEQARRDVEQLEQLIESHDVVFLMDTRESRWLPAVIAAS<br/>KRKLVINAALGFDTFVVMRHGLKPKQQGAGDLCPNHPVASADLLGSSLFANIPGYKLGCFYCNDDVVAPG<br/>DSTRDRTLDDQCTVSRPGLAVIAGALAVELMVSVLQHPEGGYAIASSDDRMNEPPTSLGLVPHQIRGFL<br/>SRFDNVLPVSLAFDKCTACSSKVLDDQYEREGFNFLAKVFNSSHSFLEDLTGLTLLHQETQAAEIWDMSSD<br/>ETI</p> <p>TRTRPLEQKLISEEDLAANDILDYKDDDDKV</p> |
| Tag:                                  | C-Myc/DDK  |
| Purity:                               | > 80% as determined by SDS-PAGE and Coomassie blue staining  |
| Concentration:                        | >0.05 µg/µL as determined by microplate BCA method   |
| Labeling Method:                      | Labeled with [U- 13C6, 15N4]-L-Arginine and [U- 13C6, 15N2]-L-Lysine   |
| Buffer:                               | 25 mM Tris-HCl, 100 mM glycine, pH 7.3   |
| Storage:                              | Store at -80°C. Avoid repeated freeze-thaw cycles.   |
| Stability:                            | Stable for 3 months from receipt of products under proper storage and handling conditions.   |
| RefSeq:                               | <a href="#">NP_006386</a>  |



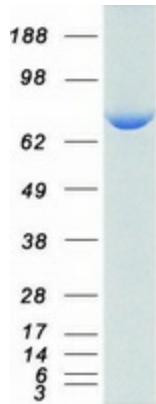
[View online »](#)

|               |   |
|---------------|---|
| RefSeq Size:  | 2396  |
| RefSeq ORF:   | 2109  |
| Synonyms:     | APG7-LIKE; APG7L; GSA7                          |
| Locus ID:     | 10533   |
| UniProt ID:   | <a href="#">O95352</a> , <a href="#">B3KQM6</a> |
| Cytogenetics: | 3p25.3  |

**Summary:** This gene encodes an E1-like activating enzyme that is essential for autophagy and cytoplasmic to vacuole transport. The encoded protein is also thought to modulate p53-dependent cell cycle pathways during prolonged metabolic stress. It has been associated with multiple functions, including axon membrane trafficking, axonal homeostasis, mitophagy, adipose differentiation, and hematopoietic stem cell maintenance. Alternative splicing results in multiple transcript variants. [provided by RefSeq, Sep 2015]

**Protein Pathways:** Regulation of autophagy

### Product images:



Coomassie blue staining of purified ATG7 protein (Cat# [TP315079]). The protein was produced from HEK293T cells transfected with ATG7 cDNA clone (Cat# [RC215079]) using MegaTran 2.0 (Cat# [TT210002]).