

## Product datasheet for PH315074

### Amylin (IAPP) (NM\_000415) Human Mass Spec Standard

#### Product data:

Product Type:	Mass Spec Standards
Description:	IAPP MS Standard C13 and N15-labeled recombinant protein (NP_000406)
Species:	Human
Expression Host:	HEK293
Expression cDNA Clone or AA Sequence:	RC215074
Predicted MW:	9.81 kDa
Protein Sequence:	>RC215074 representing NM_000415 <b>Red</b> =Cloning site <b>Green</b> =Tags(s)  MGILKLVFLIVLSVALNHLKATPIESHQVEKRKCNTATCATQRLANFLVHSSNFGAILSSSTNVGSNTY GKRNAVEVLKREPLNYLPL  <b>TRTRPLEQKLISEEDLAANDILDYKDDDDKV</b>
Tag:	C-Myc/DDK
Purity:	> 80% as determined by SDS-PAGE and Coomassie blue staining
Concentration:	>0.05 µg/µL as determined by microplate BCA method
Labeling Method:	Labeled with [U- 13C6, 15N4]-L-Arginine and [U- 13C6, 15N2]-L-Lysine
Buffer:	25 mM Tris-HCl, 100 mM glycine, pH 7.3
Storage:	Store at -80°C. Avoid repeated freeze-thaw cycles.
Stability:	Stable for 3 months from receipt of products under proper storage and handling conditions.
RefSeq:	<a href="#">NP_000406</a>
RefSeq Size:	1462
RefSeq ORF:	267
Synonyms:	DAP; IAP
Locus ID:	3375
UniProt ID:	<a href="#">P10997</a> , <a href="#">A0A024RAU1</a>
Cytogenetics:	12p12.1



[View online »](#)

**Summary:**

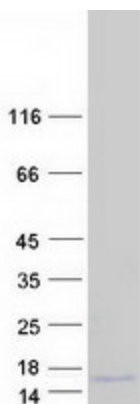
This gene encodes a member of the calcitonin family of peptide hormones. This hormone is released from pancreatic beta cells following food intake to regulate blood glucose levels and act as a satiation signal. Human patients with type 1 and advanced type 2 diabetes exhibit reduced levels of the encoded hormone in blood and pancreas. This protein also exhibits a bactericidal, antimicrobial activity. [provided by RefSeq, Jul 2016]

**Protein Families:**

Druggable Genome, Secreted Protein

**Protein Pathways:**

Maturity onset diabetes of the young

**Product images:**

Coomassie blue staining of purified IAPP protein (Cat# [TP315074]). The protein was produced from HEK293T cells transfected with IAPP cDNA clone (Cat# [RC215074]) using MegaTran 2.0 (Cat# [TT210002]).