

Product datasheet for PH315069

Complement C3 (C3) (NM_000064) Human Mass Spec Standard

Product data:

Product Type:	Mass Spec Standards
Description:	C3 MS Standard C13 and N15-labeled recombinant protein (NP_000055)
Species:	Human
Expression Host:	HEK293
Expression cDNA Clone or AA Sequence:	RC215069
Predicted MW:	187 kDa
Protein Sequence:	>RC215069 representing NM_000064 Red=Cloning site Green=Tags(s)

MGPTSGPSLLLLLTHLPLALGSPMYSIITPNILRLESEETMVLEAHDAGDVPVTVVHDFPGKKLVLVLS
SEKTVLTPATNHMGVTFITIPANREFKSEKGRNKFVTVQATFGTQVVEKVVLSLQSGYLFIQTDKTIYT
PGSTVLYRIFTVNHKLLPVGRVVMVNIENPEGIPVKQDSLSSQNQLGVLPLSWDIPELVNMGQWKIRAYY
ENSPQQVFSTEFVKEYVLPSEFVIVEPEKFFYYIYNEKGLEVTITARFLYGGKVEGTAFVIFGIQDGEQ
RISLPESLKRIPIEDGSGEVVLSRKVLLDGVQNLRAEDLVGKSLYVSATVILHSGSDMVQAERSGIPIVT
SPYQIHFTKTPKYFKPGMPFDLMVFTNPDGSPAYRVPVAVQGEDTVQSLTQGDGVAKLSINTHPSQKPL
SITVTRTKKQELSEAEQATRMTQALPYSTVGNSNNYLHLSVLRTELRPGETLNVNLFLLRMDRAHEAKIRYY
TYLIMNKGRLLKAGRQVREPGQDLVPLSITTDIPSFRVAVYYTLIGASGQREVVADSVWVDVKDSCV
GSLVVKSGQSEDRQVPVPGQMTLKEGDHGAVVLAVDKGVFLNKKNKLTQSKIWDVVEKADIGCTPG
SGKDYAGVFSADGLTFTSSSGQQAQRAELQCPQPAARRRRSVQLTEKRMKVGKYPKELRKCCEDEGMRE
NPMRFSCQRRTRFISLGEACKKVFLDCCNYITELRRQHARASHLGLARSNLDEDIAEENIVSRSEFPES
WLWNVEDLKEPPKNGISTKLMNIFLKDSITTWELAVSMSDKKGCVADPFEVTVMQDFFIDLRLPYSVV
RNEQVEIRAVLYNYRQNELKVRVELLHNPAFCSLATTKRHHQQTVTIPPKSSLVPPYVIVPLKTGLQEV
EVKAAVYHHFISDGVKSLKVVPEGIRMNKTVAVRTLDPERLREGVQKEDIPPADLSDQVPDTESETRI
LLQGTQVPAQMTEDAVERLKHLLIVTPSGCGEQNMIGMPTVIAVHYLDETEQWEKFGLEKRQGALELIK
KGYTQQLAFRQSSAFAAFVKRAPSTWLTAIVVVFSLAVNLIAIDSQVLCGAVKWLILEKQKPDGVFQE
DAPVIHQEMIGGLRNNNEKDMALTAFVLISLQEAKDICEEQVNSLPGSITKAGDFLEANYMNLQRSYTV
IAGYALAQMGRLKGPLLNKFLTTAKDKNRWEDPGKQLYNVEATSYALLALLQLKDFDFVPPVVRWLNQR
YYGGGYGSTQATFMVFQALAQYQKADPDHQELNLDVSLQLPSRSSKITHRIHWESASLLRSEETKENEGF
TVTAEGKGQGTLSVVTMYHAKAKDQLTCNKFDLKVTIKAPETEKRPQDAKNTMILEICTRYRGDQDATM
SILDISMGTGFAPDTHLQKLANGVDYRISKYELDKAFSDRNTLIIYLDKVVSHSEDDCLAFKVHVFNVE
LIQPGAVKVVAYYNNLEESCTRFYHPEKEDGKLNKLCRDELRCRAEENCFIQKSDDKVTLEERLDKACEPG
VDYVYKTRLVKVQLSNDFDEYIMAIEQTIKSGSDEVQVGGQRTFISPIKCREALKLEEKHYLMWGLSSD
FWGEPNLSYIIGKDTWEHWPEEDECQDEENQKQCQDLGAFTESMVVFVGCPCN

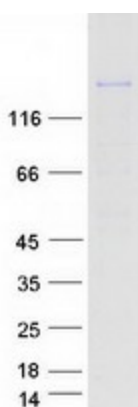
TRTRPLEQKLI SEEDLAANDILDYKDDDDKV



[View online >](#)

Tag:	C-Myc/DDK
Purity:	> 80% as determined by SDS-PAGE and Coomassie blue staining
Concentration:	>0.05 µg/µL as determined by microplate BCA method
Labeling Method:	Labeled with [U- ¹³ C ₆ , ¹⁵ N ₄]-L-Arginine and [U- ¹³ C ₆ , ¹⁵ N ₂]-L-Lysine
Buffer:	25 mM Tris-HCl, 100 mM glycine, pH 7.3
Storage:	Store at -80°C. Avoid repeated freeze-thaw cycles.
Stability:	Stable for 3 months from receipt of products under proper storage and handling conditions.
RefSeq:	NP_000055
RefSeq Size:	5067
RefSeq ORF:	4989
Synonyms:	AHUS5; ARMD9; ASP; C3a; C3b; CPAMD1; HEL-S-62p
Locus ID:	718
UniProt ID:	P01024 , V9HWA9 , B4DR57
Cytogenetics:	19p13.3
Summary:	Complement component C3 plays a central role in the activation of complement system. Its activation is required for both classical and alternative complement activation pathways. The encoded preproprotein is proteolytically processed to generate alpha and beta subunits that form the mature protein, which is then further processed to generate numerous peptide products. The C3a peptide, also known as the C3a anaphylatoxin, modulates inflammation and possesses antimicrobial activity. Mutations in this gene are associated with atypical hemolytic uremic syndrome and age-related macular degeneration in human patients. [provided by RefSeq, Nov 2015]
Protein Families:	Druggable Genome
Protein Pathways:	Complement and coagulation cascades, Systemic lupus erythematosus

Product images:



Coomassie blue staining of purified C3 protein (Cat# [TP315069]). The protein was produced from HEK293T cells transfected with C3 cDNA clone (Cat# [RC215069]) using MegaTran 2.0 (Cat# [TT210002]).