

Product datasheet for PH315059

SPAG16 (NM_001025436) Human Mass Spec Standard

Product data:

Product Type:	Mass Spec Standards
Description:	SPAG16 MS Standard C13 and N15-labeled recombinant protein (NP_001020607)
Species:	Human
Expression Host:	HEK293
Expression cDNA Clone or AA Sequence:	RC215059
Predicted MW:	20.4 kDa
Protein Sequence:	>RC215059 representing NM_001025436 Red=Cloning site Green=Tags(s) MAAQRGMPSSAVRVLEEALGMGLTAAGDARDTADAVAAEGAYYLEQVTITEASEDDYEYEEIPDDNFSIP EGEEDLAKAIQMAQEQTADTEILERKTVLPSKHAVPEVIEDFLCNFLIKMGMTRTLDCFQSEWYELIQKG VTELRTVGNVPDYYTQIMLLENENKNLKKDLKHYKQAAEYVIF TRTRPLEQKLISEEDLAANDILDYKDDDDKV
Tag:	C-Myc/DDK
Purity:	> 80% as determined by SDS-PAGE and Coomassie blue staining
Concentration:	>0.05 µg/µL as determined by microplate BCA method
Labeling Method:	Labeled with [U- ¹³ C ₆ , ¹⁵ N ₄]-L-Arginine and [U- ¹³ C ₆ , ¹⁵ N ₂]-L-Lysine
Buffer:	25 mM Tris-HCl, 100 mM glycine, pH 7.3
Storage:	Store at -80°C. Avoid repeated freeze-thaw cycles.
Stability:	Stable for 3 months from receipt of products under proper storage and handling conditions.
RefSeq:	NP_001020607
RefSeq Size:	1296
RefSeq ORF:	549
Synonyms:	PF20; WDR29
Locus ID:	79582
UniProt ID:	Q8N0X2 , Q4G1A2

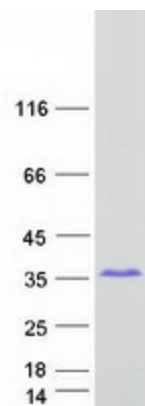


[View online »](#)

Cytogenetics: 2q34

Summary: Cilia and flagella are comprised of a microtubular backbone, the axoneme, which is organized by the basal body and surrounded by plasma membrane. SPAG16 encodes 2 major proteins that associate with the axoneme of sperm tail and the nucleus of postmeiotic germ cells, respectively (Zhang et al., 2007 [PubMed 17699735]).[supplied by OMIM, Jul 2008]

Product images:



Coomassie blue staining of purified SPAG16 protein (Cat# [TP315059]). The protein was produced from HEK293T cells transfected with SPAG16 cDNA clone (Cat# [RC215059]) using MegaTran 2.0 (Cat# [TT210002]).