

Product datasheet for PH315045

CBWD6 (NM_001085457) Human Mass Spec Standard

Product data:

Product Type:	Mass Spec Standards
Description:	CBWD6 MS Standard C13 and N15-labeled recombinant protein (NP_001078926)
Species:	Human
Expression Host:	HEK293
Expression cDNA Clone or AA Sequence:	RC215045
Predicted MW:	43.8 kDa
Protein Sequence:	>RC215045 representing NM_001085457 Red=Cloning site Green=Tags(s)

MLPAVGSVDEEEDPAEEDCPPELVPIETTQSEEEKSGLGAKIPVTIITGYLGAGKTTLLNYILTEQHSKR
VAVILNESGEGSALEKSLAVSQGGELYEEWLELRNGCLCCSVKDNGLRAIENLMQKKGKFDILLETGL
ADPGAVASMFVWDAELGSDIYLDGIITIVDSKYGLKHLTEEKPDGLINEATRQVALADIILINKTDLVPE
EDVKKLRITLRSINGLGQILETQRSVDLSNVLDLHAFDSLGSISLQKKLQHVPGTQPHLDQSIVTITFD
VPGNAKEEHLNMFIQNLLWEKNVRNKDNHCMEVIRLKGLVSIKDKSQQVIVQGVHELCDLEETPVSWKDD
TERTNRLVLIGRNLDKDILKQLFIATVTETEKQWTTTFKEDQVCT

TRTRPLEQKLI SEEDLAANDILDYKDDDDKV

Tag:	C-Myc/DDK
Purity:	> 80% as determined by SDS-PAGE and Coomassie blue staining
Concentration:	>0.05 µg/µL as determined by microplate BCA method
Labeling Method:	Labeled with [U- ¹³ C ₆ , ¹⁵ N ₄]-L-Arginine and [U- ¹³ C ₆ , ¹⁵ N ₂]-L-Lysine
Buffer:	25 mM Tris-HCl, 100 mM glycine, pH 7.3
Storage:	Store at -80°C. Avoid repeated freeze-thaw cycles.
Stability:	Stable for 3 months from receipt of products under proper storage and handling conditions.
RefSeq:	<u>NP_001078926</u>
RefSeq Size:	1719
RefSeq ORF:	1185
Synonyms:	CBWD7
Locus ID:	644019

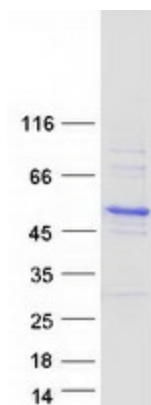


[View online »](#)

UniProt ID: [Q4V339](#)

Cytogenetics: 9p11.2

Product images:



Coomassie blue staining of purified CBWD6 protein (Cat# [TP315045]). The protein was produced from HEK293T cells transfected with CBWD6 cDNA clone (Cat# [RC215045]) using MegaTran 2.0 (Cat# [TT210002]).