

Product datasheet for PH315039

PMPCB (NM_004279) Human Mass Spec Standard

Product data:

Product Type:	Mass Spec Standards
Description:	PMPCB MS Standard C13 and N15-labeled recombinant protein (NP_004270)
Species:	Human
Expression Host:	HEK293
Expression cDNA Clone or AA Sequence:	RC215039
Predicted MW:	54.37 kDa
Protein Sequence:	>RC215039 representing NM_004279 Red=Cloning site Green=Tags(s)

MAAAARVVLSSAARRRLWGFSESLIRGAAGRSLYFGENRLRSTQAATQVVLNVPETRVTCLESLRVA
SEDSGLSTCTVGLWIDAGSRYENEKNGTAHFLEHMAFKGTTKRSQDLLELEIENMGAHLNAYTSREQTV
YYAKAFSKDLPRAVEILADIIQNSTLGEAEIERERGVILREMQEVTNLQEVVFDYLHATAYQNTALGRT
ILGPTENIKSISRKDLVDYITTHYKGPRIVLAAGGVSHDELDDLAKFHFGDSLCTHKGEIPALPPCKFT
GSEIRVRDDKMPHLAIAVEAVGWAHPDTICLMVANTLIGNWDRSFGGGMNLSKLAQLTCHGNLCHSF
QSFNTSYTDTGLWGLYMCESSTVADMLHVQKEWMRLCTSVTESEVARARNLLKTNMLLQLDGSTPICE
DIGRQMLCYNRRIPPELEARIDAVNAETIREVCTKYIYNRSPAIAAVGPIKQLPDFKQIRSNMCWLRD

TRTRPLEQKLISEEDLAANDILDYKDDDDKV

Tag:	C-Myc/DDK
Purity:	> 80% as determined by SDS-PAGE and Coomassie blue staining
Concentration:	>0.05 µg/µL as determined by microplate BCA method
Labeling Method:	Labeled with [U- 13C6, 15N4]-L-Arginine and [U- 13C6, 15N2]-L-Lysine
Buffer:	25 mM Tris-HCl, 100 mM glycine, pH 7.3
Storage:	Store at -80°C. Avoid repeated freeze-thaw cycles.
Stability:	Stable for 3 months from receipt of products under proper storage and handling conditions.
RefSeq:	<u>NP_004270</u>
RefSeq Size:	1771
RefSeq ORF:	1467
Synonyms:	Beta-MPP; MAS1; MPP11; MPPB; MPPP52; P-52



[View online »](#)

Locus ID: 9512

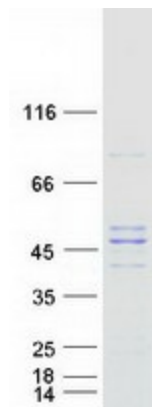
UniProt ID: [O75439](#), [B3KM34](#), [Q96CP5](#)

Cytogenetics: 7q22.1

Summary: This gene is a member of the peptidase M16 family and encodes a protein with a zinc-binding motif. This protein is located in the mitochondrial matrix and catalyzes the cleavage of the leader peptides of precursor proteins newly imported into the mitochondria, though it only functions as part of a heterodimeric complex. [provided by RefSeq, Jul 2008]

Protein Families: Druggable Genome, Protease

Product images:



Coomassie blue staining of purified PMPCB protein (Cat# [TP315039]). The protein was produced from HEK293T cells transfected with PMPCB cDNA clone (Cat# [RC215039]) using MegaTran 2.0 (Cat# [TT210002]).