

## Product datasheet for PH315018

### AGL (NM\_000643) Human Mass Spec Standard

#### Product data:

Product Type:	Mass Spec Standards
Description:	AGL MS Standard C13 and N15-labeled recombinant protein (NP_000634)
Species:	Human
Expression Host:	HEK293
Expression cDNA Clone or AA Sequence:	RC215018
Predicted MW:	174.6 kDa
Protein Sequence:	>RC215018 representing NM_000643 Red=Cloning site Green=Tags(s)

MGHSKQIRILLLNEMEKLEKTLFRLEQGYELQFRLGPTLQGKAVTVYTNYPFGETFNREKFRSLDWENP  
TEREDDSKYCKLNLQQSGSFQYYFLQGNKSGGYIVVDPILRVGADNHVLPDVCVTLQTFLLAKCLGPF  
DEWESRLRVAKESGYNMIHFTPLQTLGLSRSCYSLANQLELNPDRSRPNRKYTWNDVQGLVEKLLKEWNV  
ICITDVVYNHTAANSKWIQEHEPCAYNLVNSPHLKPWVLDRALWRFSCDVAEGYKEKGPAL IENDHH  
MNSIRKIIWEDI FPKLKLWEFFQVDVNKAVEQFRRLTQENRRVTKSDPNQHLTIIQDPEYRRFGCTVDM  
NIALTTFIPHDKGPAAIECCNWFHHRMEELNSEKHRLINYHQEQAVNCLLGNVYERLAGHGPKLGPVT  
RKHPLVTRYFTFPFEEIDF SMEESMIHLPNKACFLMAHNGWVMGDDPLRNFAEPGSEVYL RRELICWGDS  
VKLRYGNKPEDCPYLWAHMKKYTEITATYFQGVRLDNCHSTPLHVAEYMLDAARNLQPNLYVVAELFTGS  
EDLDNVFVTRLGISSLIREAMSAYNSHEEGRVYRYGGEPVGSFVQPCLRPLMPAIAHALFMDITHDNEC  
PIVHRSAYDALPSTTIVSMACCASGSTRGYDELVPHQISVVSEERFYTKWNPEALPSNTGEVNFQSGIIA  
ARCAISKLHQELGAKGFIQVYVDQVDEDIVAVTRHSPSIHQSVVAVSRTAFRNPKTSFYSKEVPQMCIPG  
KIEEVVLEARTIERNTKPYRKDENSINGTPDITVEIREHIQLNESKIVKQAGVATKGPNEYIQEIEFENL  
SPGSVIIIFRVSLDPAHQAVGILRNHLTQFSPHFKSGSLAVDNADPILKIPFASLASRLTLAELNQLYR  
CESEEKEDGGGCYDIPNWSALKYAGLQGLMSVLAERPKNDLGHFPCNNLRSGDWMIDYVSNRLISRS  
IAEVGKWLQAMFFYLKQIPRYLIPCYFDAILIGAYTTLLDTAWKQMSFVQNGSTFVKHLSLGSVQLCGV  
GKFPSPILSPALMDVPYRLNEITKEKEQCCVSLAAGLPHFSSGIFRCWGRDTFIALRGILLITGRYVEA  
RNIIILAFAGTLRHGLIPNLLGEGYARYNCRDAVWWWLQCIQDYCKMVPNGLDILKCPVSRMYPTDSDSAP  
LPAGTLDQPLFEVIQEAMQKHMQGIQFRERNAGPQIDRNMKDEGFNITAGVDEETGFVYGGNRFNCGTWM  
DKMGESDRARNRGIPATPRDGS AVEIVGLSKSAVRWLELLESKKNIFPYHEVTVKRHGKAIKVSYDEWNRK  
IQDNFEKLFHVSEDPDLNEKHPNLVHKRGIYKDSYGASSPWCDYQLRPNFTIAMVVAPELFTTEKAWKA  
LEIAEKLLGPLGMKTLDPDDMVYCGIYDNALDNDNYNLAKGFNYHQPEWLWPIGYFLRAKLYFSRLMG  
PETTAKTIVLVKNVLSRHYVHLERSPWKGLPEL TNENAQYCPFCSETQAWSIATILETLTYDL

TRTRPLEQKLISEEDLAANDILDYKDDDDKV

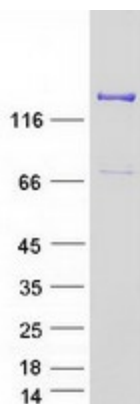
Tag:	C-Myc/DDK
Purity:	> 80% as determined by SDS-PAGE and Coomassie blue staining



[View online >](#)

Concentration:	>0.05 µg/µL as determined by microplate BCA method
Labeling Method:	Labeled with [U- <sup>13</sup> C <sub>6</sub> , <sup>15</sup> N <sub>4</sub> ]-L-Arginine and [U- <sup>13</sup> C <sub>6</sub> , <sup>15</sup> N <sub>2</sub> ]-L-Lysine
Buffer:	25 mM Tris-HCl, 100 mM glycine, pH 7.3
Storage:	Store at -80°C. Avoid repeated freeze-thaw cycles.
Stability:	Stable for 3 months from receipt of products under proper storage and handling conditions.
RefSeq:	<a href="#">NP_000634</a>
RefSeq Size:	7165
RefSeq ORF:	4596
Synonyms:	GDE
Locus ID:	178
UniProt ID:	<a href="#">P35573</a> , <a href="#">A0A0S2A4E4</a>
Cytogenetics:	1p21.2
Summary:	This gene encodes the glycogen debrancher enzyme which is involved in glycogen degradation. This enzyme has two independent catalytic activities which occur at different sites on the protein: a 4-alpha-glucotransferase activity and a amylo-1,6-glucosidase activity. Mutations in this gene are associated with glycogen storage disease although a wide range of enzymatic and clinical variability occurs which may be due to tissue-specific alternative splicing. Alternatively spliced transcripts encoding different isoforms have been described. [provided by RefSeq, Jul 2008]
Protein Families:	Druggable Genome
Protein Pathways:	Metabolic pathways, Starch and sucrose metabolism

### Product images:



Coomassie blue staining of purified AGL protein (Cat# [TP315018]). The protein was produced from HEK293T cells transfected with AGL cDNA clone (Cat# [RC215018]) using MegaTran 2.0 (Cat# [TT210002]).