

Product datasheet for PH315011

SAP1 (PTPRH) (NM_002842) Human Mass Spec Standard

Product data:

Product Type:	Mass Spec Standards
Description:	PTPRH MS Standard C13 and N15-labeled recombinant protein (NP_002833)
Species:	Human
Expression Host:	HEK293
Expression cDNA Clone or AA Sequence:	RC215011
Predicted MW:	122.2 kDa
Protein Sequence:	>RC215011 representing NM_002842 Red=Cloning site Green=Tags(s)

MAGAGGGLGVWGNLVLGLCSWTGARAPAPNPGRNLTVETQTTSSISLSWEVPDGLDSQNSNYWVQCTGD
GGTTETRNTTATNVTVDGLGPGSLYTCSVWVEKDGVNSSVGTVTTATAPNPVRNLRVEAQTNSSIALTWE
VPDGPDPQNSTYGVEYTDGGRAGTRSTAHTNITVDGLEPGCLYAFSMWVGKNGINSRETRNATTAHNP
VRNLRVEAQTSSISLSWEVPDGTDPQNSTYCVQCTGDGGRTETRNTTDRTRVTDGLGPGSLYTCSVWVE
KDGVNSSVEIVTSATAPNPVRNL TVEAQTNSSIALTWEVPDGPDPQNSTYGVEYTDGGRAGTRSTAYTN
ITVDRLEPGCLYVFSVWVGKNGINSRETRNATTAPNPVRNLHMETQTNSSIALCWEVPDGPYPQDYTYW
VEYTDGDDGTETRNTTNTSVTAERLEPGTYTFSVWAEKNGARGSRQNSISTVPNAVTSLSKQDWTNST
IALRWTAPQGPQSSYSYVWSWVREGMTDPRQTSTSGTDITLKELEAGSLYHLTVWAERNEVRGYNSTLT
AATAPNEVTDLQNETQTKNSVMLWVKAPGDPHSQLYVYVWQWASKGHPRRGQDPQANWVNTSRTNETWY
KVEALEPGTYNFYVWAERNDVASSTQSLCASTYPDTVTITSCVSTAGYGVNLIWSCPQGGYEAFALELV
GGQRGSQDRSSCGEAVSVLGLGPARSYPATITTIWDMKVVSHSVVCHTESAGVIAGAFVIGILLFLILVG
LLIFFLKRNRKQKPELRDLVSSPGDIPAEDFADHVRKNERDSNCGFADEYQQLSLVGHSSQSMVAS
ASENNAKNRYRNVL PYDWSRVPLKPIHEEPGSDYINASFMPGLWSPQEF IATQGPLPQTVGDFWRLVWEQ
QSHTLVMLTNCMEAGRVKCEHYWPLDSQPCTHGHLRVTLVGEV MENWTVRELLLLQVEEQKLSVRQFH
YQAWPDHGVPSPTLLAFWRMLRQWLDQTMEGPPIVHCSAGVGRGTGLIALDVLLRQLQSEGLLGPFS
FVRKMRESRPLMVQTEAQYVFLHQICILRFLQSAQAPAEKEVPYEDVENLIYENVAAIQAHKLEV

TRTRPLEQKLI SEEDLAANDILDYKDDDDKV

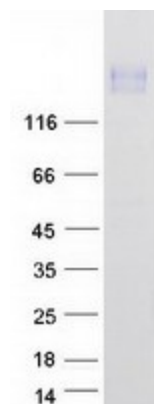
Tag:	C-Myc/DDK
Purity:	> 80% as determined by SDS-PAGE and Coomassie blue staining
Concentration:	>0.05 µg/µL as determined by microplate BCA method
Labeling Method:	Labeled with [U- ¹³ C ₆ , ¹⁵ N ₄]-L-Arginine and [U- ¹³ C ₆ , ¹⁵ N ₂]-L-Lysine
Buffer:	25 mM Tris-HCl, 100 mM glycine, pH 7.3



[View online »](#)

Storage:	Store at -80°C. Avoid repeated freeze-thaw cycles.
Stability:	Stable for 3 months from receipt of products under proper storage and handling conditions.
RefSeq:	NP_002833
RefSeq Size:	3895
RefSeq ORF:	3345
Synonyms:	R-PTP-H; SAP1
Locus ID:	5794
UniProt ID:	Q9HD43
Cytogenetics:	19q13.42
Summary:	<p>The protein encoded by this gene is a member of the protein tyrosine phosphatase (PTP) family. PTPs are known to be signaling molecules that regulate a variety of cellular processes including cell growth, differentiation, mitotic cycle, and oncogenic transformation. This PTP possesses an extracellular region, a single transmembrane region, and a single intracytoplasmic catalytic domain, and thus represents a receptor-type PTP. The extracellular region contains eight fibronectin type III-like repeats and multiple N-glycosylation sites. The gene was shown to be expressed primarily in brain and liver, and at a lower level in heart and stomach. It was also found to be expressed in several cancer cell lines, but not in the corresponding normal tissues. Alternative splicing results in multiple transcript variants. [provided by RefSeq, Jun 2009]</p>
Protein Families:	Druggable Genome, Transmembrane

Product images:



Coomassie blue staining of purified PTPRH protein (Cat# [TP315011]). The protein was produced from HEK293T cells transfected with PTPRH cDNA clone (Cat# [RC215011]) using MegaTran 2.0 (Cat# [TT210002]).