

## Product datasheet for PH315007

### INSM1 (NM\_002196) Human Mass Spec Standard

#### Product data:

Product Type:	Mass Spec Standards
Description:	INSM1 MS Standard C13 and N15-labeled recombinant protein (NP_002187)
Species:	Human
Expression Host:	HEK293
Expression cDNA Clone or AA Sequence:	RC215007
Predicted MW:	52.7 kDa
Protein Sequence:	>RC215007 representing NM_002196 Red=Cloning site Green=Tags(s)

MPRGFLVKRSKKSTPVSYRVRGGEDGDRALLLSPSCGGARAEPAPSPVPGPLPPPPAERAHAALAAAL  
ACAPGPQPPPQGPRAAHFGNPEAAHPALYSPTRPVSREHEKHKHYFERSFNLGSPVSAESFPTPAALLGG  
GGGGGASGAGGGGTCGGDPLLFPAPAEKMGTAFSAGAEAAARGPGPGPPLPPAAALRPPGKRPPPTAAEP  
PAKAVKAPGAKKPKAIRKLHFEDEVTTSPVLGLIKEGPVEAPRGRAGGAARPLGEFICQLCKEYADPF  
ALAQHKCSRIVRVEYRCPECAKVFSCPANLASHRRWHKPRPAPAAARAPEPEAAARAEAREAPGGGSDRD  
TPSPGGVSESGSEDGLYECHCAKKFRRQAYLRKHLLAHHQALQAKGAPLAPPAEDLLALYPGPDEKAPQ  
EAAGDGEGAGVLGLSASAECHLCPVCGESFASKGAQERHLRLLHAAQVFPCKYCPATFYSSPGLTRHINK  
CHPSENQVILLQVPVRPAC

TRTRPLEQKLISEEDLAANDILDYKDDDDKV

Tag:	C-Myc/DDK
Purity:	> 80% as determined by SDS-PAGE and Coomassie blue staining
Concentration:	>0.05 µg/µL as determined by microplate BCA method
Labeling Method:	Labeled with [U- 13C6, 15N4]-L-Arginine and [U- 13C6, 15N2]-L-Lysine
Buffer:	25 mM Tris-HCl, 100 mM glycine, pH 7.3
Storage:	Store at -80°C. Avoid repeated freeze-thaw cycles.
Stability:	Stable for 3 months from receipt of products under proper storage and handling conditions.
RefSeq:	<u>NP_002187</u>
RefSeq Size:	2838
RefSeq ORF:	1530



[View online »](#)

Synonyms: IA-1; IA1

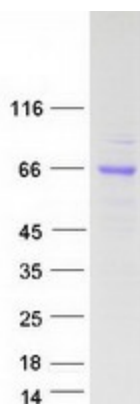
Locus ID: 3642

UniProt ID: [Q01101](#)

Cytogenetics: 20p11.23

**Summary:** Insulinoma-associated 1 (INSM1) gene is intronless and encodes a protein containing both a zinc finger DNA-binding domain and a putative prohormone domain. This gene is a sensitive marker for neuroendocrine differentiation of human lung tumors. [provided by RefSeq, Jul 2008]

### Product images:



Coomassie blue staining of purified INSM1 protein (Cat# [TP315007]). The protein was produced from HEK293T cells transfected with INSM1 cDNA clone (Cat# [RC215007]) using MegaTran 2.0 (Cat# [TT210002]).