

Product datasheet for PH315002

MSRB2 (NM_012228) Human Mass Spec Standard

Product data:

Product Type:	Mass Spec Standards
Description:	MSRB2 MS Standard C13 and N15-labeled recombinant protein (NP_036360)
Species:	Human
Expression Host:	HEK293
Expression cDNA Clone or AA Sequence:	RC215002
Predicted MW:	21.47 kDa
Protein Sequence:	>RC215002 representing NM_012228 Red=Cloning site Green=Tags(s) MGAGAETGRGQRAAAPERRHGRLLWLLRGLTLGTAPRRVRGQAGGGPGTAGIVGEAGSLATCELPLAK SEWQKKLTPEQFYVTREKGTPEPPFSGIYLNKEAGMYHCVCCDSPLFSSEKKYCSGTGWPSFSEAHGTSG SDESHTGILRRLDTSLSGARTEVVKQCEAHLGHVFPDGPNGQRF CINSVALKFKPRKH TRTRPLEQKLI SEEDLAANDILDYKDDDDKV
Tag:	C-Myc/DDK
Purity:	> 80% as determined by SDS-PAGE and Coomassie blue staining
Concentration:	>0.05 µg/µL as determined by microplate BCA method
Labeling Method:	Labeled with [U- 13C6, 15N4]-L-Arginine and [U- 13C6, 15N2]-L-Lysine
Buffer:	25 mM Tris-HCl, 100 mM glycine, pH 7.3
Storage:	Store at -80°C. Avoid repeated freeze-thaw cycles.
Stability:	Stable for 3 months from receipt of products under proper storage and handling conditions.
RefSeq:	NP_036360
RefSeq Size:	903
RefSeq ORF:	603
Synonyms:	CBS-1; CBS1; CGI-131; MSRB; PILB
Locus ID:	22921
UniProt ID:	Q9Y3D2



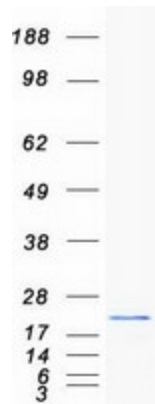
[View online »](#)

Cytogenetics: 10p12.2

Summary: Methionine-sulfoxide reductase that specifically reduces methionine (R)-sulfoxide back to methionine. While in many cases, methionine oxidation is the result of random oxidation following oxidative stress, methionine oxidation is also a post-translational modification that takes place on specific residue. Upon oxidative stress, may play a role in the preservation of mitochondrial integrity by decreasing the intracellular reactive oxygen species build-up through its scavenging role, hence contributing to cell survival and protein maintenance. [UniProtKB/Swiss-Prot Function]

Protein Families: Transcription Factors

Product images:



Coomassie blue staining of purified MSRB2 protein (Cat# [TP315002]). The protein was produced from HEK293T cells transfected with MSRB2 cDNA clone (Cat# [RC215002]) using MegaTran 2.0 (Cat# [TT210002]).