

## Product datasheet for PH314997

### IMPG1 (NM\_001563) Human Mass Spec Standard

#### Product data:

Product Type:	Mass Spec Standards
Description:	IMPG1 MS Standard C13 and N15-labeled recombinant protein (NP_001554)
Species:	Human
Expression Host:	HEK293
Expression cDNA Clone or AA Sequence:	RC214997
Predicted MW:	89.4 kDa
Protein Sequence:	>RC214997 protein sequence Red=Cloning site Green=Tags(s)

MYLETRRAIFVFWIFLQVQGTKDISINIYHSETKDIDNPPRNETTESTEKMYKMSTMRRIFDLAKHRTKR  
SAFFPTGVKVCPEQSMKQILDLSLQAYYRLRVCQEAVWEAYRIFLDRIPDTGEYQDWVSICQQETFLFDI  
GKNFSNSQEHLDLLQQRIRKQSFDRKDEISAETLGEGETIVISTDVANVSLGPFPLTPDDTLLEIL  
DNTLNDTKMPTTERETEFVLEEQRVELSVSLVNQKFAELADSQSPYYQELAGKSQLQMOKIFKKLPGF  
KKIHVLGFRPKKEKDGSSSTEMQLTAIFKRHSAEAKSPASDLLSFDSNKIESEEVYHGTMEEDKQPEIYL  
TATDLKRLISKALEEQSLDVGTIQFTDEIAGSLPAFGPDTQSELPTSFVITEDATLSPELPPVEPQLE  
TVDGAEHGLPDTWSPPAMASTSLSEAPFFMASSIFSLTDQGTDTMATDQTMVPLGTLIPTSDYSAIS  
QLALGISHPPASSDDSRSSAGGEDMVRDLDEMDSLDPAPSEVPELSEYVSVDPHFLEDTPVSALQYIT  
TSSMTIAPKGRELVVFFSLRVANMAFSDNLFNKSSLEYRALEQQFTQLLVPYLRNLTGFKQLEILNFRN  
GSVIVNSKMKFAKSVPYNTKAVHGVLEDFRSAAQQLHLEIDSYSLNIEPADQADPCKFLACGEFAQC  
KNEWTEEAECRCKPGYDSQGSGLDGLPEGLCGPGTKECEVLQGGKAPCRLPDHSENQAYKTSVKKFQNN  
NKVISKRNSELLTVEYEEFNHQDWEGN

TRTRPLEQKLISEEDLAANDILDYKDDDDKV

Tag:	C-Myc/DDK
Purity:	> 80% as determined by SDS-PAGE and Coomassie blue staining
Concentration:	>0.05 µg/µL as determined by microplate BCA method
Labeling Method:	Labeled with [U- <sup>13</sup> C <sub>6</sub> , <sup>15</sup> N <sub>4</sub> ]-L-Arginine and [U- <sup>13</sup> C <sub>6</sub> , <sup>15</sup> N <sub>2</sub> ]-L-Lysine
Buffer:	25 mM Tris-HCl, 100 mM glycine, pH 7.3
Storage:	Store at -80°C. Avoid repeated freeze-thaw cycles.
Stability:	Stable for 3 months from receipt of products under proper storage and handling conditions.
RefSeq:	<a href="#">NP_001554</a>



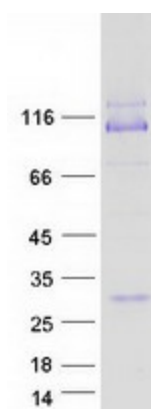
[View online »](#)

RefSeq Size:	3576
RefSeq ORF:	2391
Synonyms:	GP147; IPM150; SPACR; VMD4
Locus ID:	3617
UniProt ID:	<a href="#">Q17R60</a>
Cytogenetics:	6q14.1

**Summary:** This gene encodes a protein that is a major component of the retinal interphotoreceptor matrix. The encoded protein is a proteoglycan that is thought to play a role in maintaining viability of photoreceptor cells and in adhesion of the neural retina to the retinal pigment epithelium. Alternate splicing results in multiple transcript variants. [provided by RefSeq, Sep 2013]

**Protein Families:** Druggable Genome, Secreted Protein

### Product images:



Coomassie blue staining of purified IMPG1 protein (Cat# [TP314997]). The protein was produced from HEK293T cells transfected with IMPG1 cDNA clone (Cat# [RC214997]) using MegaTran 2.0 (Cat# [TT210002]).