

## Product datasheet for PH314991

### CHMP1A (NM\_002768) Human Mass Spec Standard

#### Product data:

Product Type:	Mass Spec Standards
Description:	CHMP1A MS Standard C13 and N15-labeled recombinant protein (NP_002759)
Species:	Human
Expression Host:	HEK293
Expression cDNA Clone or AA Sequence:	RC214991
Predicted MW:	21.5 kDa
Protein Sequence:	>RC214991 representing NM_002768 Red=Cloning site Green=Tags(s)  MDDTLFQLKFTAKQLEKLAKKAEKDSKAEQAKVKKALLQKNVECARVYAENAIRKKNEGVNWRMASRVD AVASKVQTAVTMKGVTKNMAQVTKALDKALSTMDLQKVSSVMDRFEQQVQNLDVHTSVMEDSMSSATTLT TPQEQVDSLIMQIAEENGLVLDQLSQLPEGASAVGESSVRSQEDQLSRRLAALRN  TRTRPLEQKLISEEDLAANDILDYKDDDDKV
Tag:	C-Myc/DDK
Purity:	> 80% as determined by SDS-PAGE and Coomassie blue staining
Concentration:	>0.05 µg/µL as determined by microplate BCA method
Labeling Method:	Labeled with [U- <sup>13</sup> C <sub>6</sub> , <sup>15</sup> N <sub>4</sub> ]-L-Arginine and [U- <sup>13</sup> C <sub>6</sub> , <sup>15</sup> N <sub>2</sub> ]-L-Lysine
Buffer:	25 mM Tris-HCl, 100 mM glycine, pH 7.3
Storage:	Store at -80°C. Avoid repeated freeze-thaw cycles.
Stability:	Stable for 3 months from receipt of products under proper storage and handling conditions.
RefSeq:	<a href="#">NP_002759</a>
RefSeq Size:	2474
RefSeq ORF:	588
Synonyms:	CHMP1; PCH8; PCOLN3; PRSM1; VPS46-1; VPS46A
Locus ID:	5119
UniProt ID:	<a href="#">Q9HD42</a>



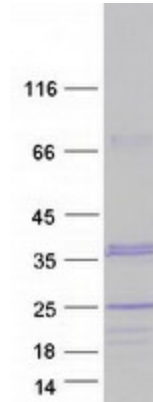
[View online »](#)

**Cytogenetics:** 16q24.3

**Summary:** This gene encodes a member of the CHMP/Chmp family of proteins which are involved in multivesicular body sorting of proteins to the interiors of lysosomes. The initial prediction of the protein sequence encoded by this gene suggested that the encoded protein was a metallopeptidase. The nomenclature has been updated recently to reflect the correct biological function of this encoded protein. Several transcripts encoding different isoforms have been found for this gene. [provided by RefSeq, Dec 2012]

**Protein Families:** Druggable Genome, Transcription Factors

**Product images:**



Coomassie blue staining of purified CHMP1A protein (Cat# [TP314991]). The protein was produced from HEK293T cells transfected with CHMP1A cDNA clone (Cat# [RC214991]) using MegaTran 2.0 (Cat# [TT210002]).