

## Product datasheet for PH314976

### EPS8 like protein 3 (EPS8L3) (NM\_024526) Human Mass Spec Standard

#### Product data:

Product Type:	Mass Spec Standards
Description:	EPS8L3 MS Standard C13 and N15-labeled recombinant protein (NP_078802)
Species:	Human
Expression Host:	HEK293
Expression cDNA Clone or AA Sequence:	RC214976
Predicted MW:	63.3 kDa
Protein Sequence:	>RC214976 representing NM_024526 Red=Cloning site Green=Tags(s)

MSRPSSRAIYLHRKEYSQNLTSEPTLLQHRVEHLMTCCKQGSQRVQGPEDALQKLFEMDAQGRVWSQDLIL  
QVRDGWLQLLDIETKEELDSYRLDSIQAMNVALNTCSYNSILSITVQEPGLPGTSTLLFQCQEVGAERLK  
TSLQKALEEELEQRPLGGLQPGQDRWRGPAMERPLPMEQARYLEPGIPPEQPHQRTLEHSLPPSPRPLP  
RHTSAREPSAFTLPPRRSSPEDPERDEEVLNHVLRDIELFMGKLEKAQAKTSRKKKFGKKNKQGGT  
QAQYIDCFQKIKHSFNLLGRLATWLKETSAPELVHILFKSLNFI LARCPEAGLAAQVISPLLTPKAINLL  
QSCLSPPESNLWMGLGPAWTTSRADWTGDEPLPYQPTFSDDWQLPEPSSQAPLGYQDPVSLRPSSPKPAQ  
PALKMQVLYEFEARNPRELTVVQGEKLEVLHDSKRWWLVKNEAGRSGYIPSNILEPLQPGTPTGQSQSPS  
RVPMLRLSSRPPEVTDWLQAENFSTATVRTLGSLLTGSQLLRIRPGEQMLCPQEAPRILSRLEAVRRMLG  
ISP

TRTRPLEQKLI SEEDLAANDILDYKDDDDKV

Tag:	C-Myc/DDK
Purity:	> 80% as determined by SDS-PAGE and Coomassie blue staining
Concentration:	>0.05 µg/µL as determined by microplate BCA method
Labeling Method:	Labeled with [U- <sup>13</sup> C <sub>6</sub> , <sup>15</sup> N <sub>4</sub> ]-L-Arginine and [U- <sup>13</sup> C <sub>6</sub> , <sup>15</sup> N <sub>2</sub> ]-L-Lysine
Buffer:	25 mM Tris-HCl, 100 mM glycine, pH 7.3
Storage:	Store at -80°C. Avoid repeated freeze-thaw cycles.
Stability:	Stable for 3 months from receipt of products under proper storage and handling conditions.
RefSeq:	<a href="#">NP_078802</a>
RefSeq Size:	2166
RefSeq ORF:	1689



[View online »](#)

**Synonyms:** EPS8R3; HYPT5

**Locus ID:** 79574

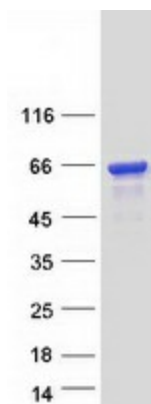
**UniProt ID:** [Q8TE67](#), [A8K2J6](#), [Q8TE67-2](#)

**Cytogenetics:** 1p13.3

**Summary:** This gene encodes a protein that is related to epidermal growth factor receptor pathway substrate 8 (EPS8), a substrate for the epidermal growth factor receptor. The function of this protein is unknown. Alternatively spliced transcript variants encoding different isoforms exist. [provided by RefSeq, Jul 2008]

**Protein Families:** Druggable Genome

### Product images:



Coomassie blue staining of purified EPS8L3 protein (Cat# [TP314976]). The protein was produced from HEK293T cells transfected with EPS8L3 cDNA clone (Cat# [RC214976]) using MegaTran 2.0 (Cat# [TT210002]).