

Product datasheet for PH314955

GOSR1 (NM_001007024) Human Mass Spec Standard

Product data:

Product Type:	Mass Spec Standards
Description:	GOSR1 MS Standard C13 and N15-labeled recombinant protein (NP_001007025)
Species:	Human
Expression Host:	HEK293
Expression cDNA Clone or AA Sequence:	RC214955
Predicted MW:	28.61 kDa
Protein Sequence:	>RC214955 representing NM_001007024 Red=Cloning site Green=Tags(s) MAAGTSSYWEDLRKQARQLENELDKLVSFSLKCTSYSHSSTRDGRDRYSSDTPLLNGSSQDRMFETM AIEIEQLLARLTGVNDKMAEYTNAGVPSLNAALMHTLQRHRDILQDYTHEFHKTKANFMAIRERENLMG SVRKDIESYKSGSGVNNRRETELFLKEHDHLRNSDRLIEETISIAMATKENMTSQRGMLKSIHSKMNTLAN RFPVNSLIQRINLRKRDSLILGGVIGICTILLLLYAFH TRTRPLEQKLISEEDLAANDILDYKDDDDKV
Tag:	C-Myc/DDK
Purity:	> 80% as determined by SDS-PAGE and Coomassie blue staining
Concentration:	>0.05 µg/µL as determined by microplate BCA method
Labeling Method:	Labeled with [U- ¹³ C ₆ , ¹⁵ N ₄]-L-Arginine and [U- ¹³ C ₆ , ¹⁵ N ₂]-L-Lysine
Buffer:	25 mM Tris-HCl, 100 mM glycine, pH 7.3
Storage:	Store at -80°C. Avoid repeated freeze-thaw cycles.
Stability:	Stable for 3 months from receipt of products under proper storage and handling conditions.
RefSeq:	NP_001007025
RefSeq Size:	5246
RefSeq ORF:	750
Synonyms:	GOLIM2; GOS-28; GOS28; GOS28/P28; GS28; P28
Locus ID:	9527
UniProt ID:	O95249



[View online »](#)

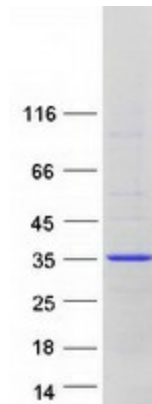
Cytogenetics: 17q11.2

Summary: This gene encodes a trafficking membrane protein which transports proteins among the endoplasmic reticulum and the Golgi and between Golgi compartments. This protein is considered an essential component of the Golgi SNAP receptor (SNARE) complex. Alternatively spliced transcript variants encoding distinct isoforms have been found for this gene. [provided by RefSeq, Jul 2008]

Protein Families: Druggable Genome, Transmembrane

Protein Pathways: SNARE interactions in vesicular transport

Product images:



Coomassie blue staining of purified GOSR1 protein (Cat# [TP314955]). The protein was produced from HEK293T cells transfected with GOSR1 cDNA clone (Cat# [RC214955]) using MegaTran 2.0 (Cat# [TT210002]).