

## Product datasheet for PH314953

### EFEMP1 (NM\_004105) Human Mass Spec Standard

#### Product data:

Product Type:	Mass Spec Standards
Description:	EFEMP1 MS Standard C13 and N15-labeled recombinant protein (NP_004096)
Species:	Human
Expression Host:	HEK293
Expression cDNA Clone or AA Sequence:	RC214953
Predicted MW:	54.6 kDa
Protein Sequence:	>RC214953 protein sequence Red=Cloning site Green=Tags(s)

MLKALFLTMLTLALVKSQDTEETITYTQCTDGYEWDVPVRQQCKDIDECDIVPDACKGGMKCVNHYGGYLC  
LPKTAQIIIVNNEQPQETQPAEGTSGATTGVVAASSMATSGVLPGGGFVASAAAVAGPEMQTGRNNFVIR  
RNPADPQRIPSNPSHRIQCAAGYEQSEHNVCQDIDECTAGTHNCRADQVCINLRGSFACQCPPGYQKRGE  
QCVDIDECTIPPYCHQRCVNTPGSFYQCQSPGFQLAANNYTCVDINECDASNQCAQQCYNILGSFICQCN  
QGYELSSDRLNCEIDECRTSSYLQYQCVNEPGKFCMCPQGYQVRSRTCQDINECETTNECREDEMC  
WNYHGGFRCYPRNPCQDPYILTPENRCVCPVSNAMCRELPQSIVYKYMSIRSDRSVPSDIFQIATTIYA  
NTINTFRIKSGNENGEFYLRQTSPVSAMLVLVKSLSGPREHIVDLEMLTVSSIGTFRTSSVLRLTIIVGP  
FSF

TRTRPLEQKLISEEDLAANDILDYKDDDDKV

Tag:	C-Myc/DDK
Purity:	> 80% as determined by SDS-PAGE and Coomassie blue staining
Concentration:	>0.05 µg/µL as determined by microplate BCA method
Labeling Method:	Labeled with [U- <sup>13</sup> C <sub>6</sub> , <sup>15</sup> N <sub>4</sub> ]-L-Arginine and [U- <sup>13</sup> C <sub>6</sub> , <sup>15</sup> N <sub>2</sub> ]-L-Lysine
Buffer:	25 mM Tris-HCl, 100 mM glycine, pH 7.3
Storage:	Store at -80°C. Avoid repeated freeze-thaw cycles.
Stability:	Stable for 3 months from receipt of products under proper storage and handling conditions.
RefSeq:	<u>NP_004096</u>
RefSeq Size:	2936
RefSeq ORF:	1479



[View online »](#)

**Synonyms:** DHRD; DRAD; EGF-containing fibulin-like extracellular matrix protein 1; FBLN3; FBNL; fibrillin-like; fibulin 3; FLJ35535; MGC111353; MLVT; MTLV; S1-5

**Locus ID:** 2202

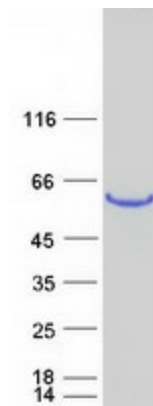
**UniProt ID:** [Q12805](#)

**Cytogenetics:** 2p16.1

**Summary:** This gene encodes a member of the fibulin family of extracellular matrix glycoproteins. Like all members of this family, the encoded protein contains tandemly repeated epidermal growth factor-like repeats followed by a C-terminus fibulin-type domain. This gene is upregulated in malignant gliomas and may play a role in the aggressive nature of these tumors. Mutations in this gene are associated with Doyme honeycomb retinal dystrophy. Alternatively spliced transcript variants that encode the same protein have been described. [provided by RefSeq, Nov 2009]

**Protein Families:** Secreted Protein

### Product images:



Coomassie blue staining of purified EFEMP1 protein (Cat# [TP314953]). The protein was produced from HEK293T cells transfected with EFEMP1 cDNA clone (Cat# [RC214953]) using MegaTran 2.0 (Cat# [TT210002]).