

Product datasheet for PH314947

CT45A1 (NM_001017417) Human Mass Spec Standard

Product data:

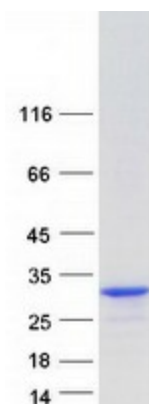
Product Type:	Mass Spec Standards
Description:	CT45A1 MS Standard C13 and N15-labeled recombinant protein (NP_001017417)
Species:	Human
Expression Host:	HEK293
Expression cDNA Clone or AA Sequence:	RC214947
Predicted MW:	21.1 kDa
Protein Sequence:	>RC214947 representing NM_001017417 Red =Cloning site Green =Tags(s) MTDKTEKVAVDPE TVFKRPRECDSPSYQKRQRMALLARKQGAGDSL IAGSAMSKEKKLMTGHAIPPSQLD SQIDDFTFGFSKDRMMQKPGSNAPVGGNVTSSFSGDDLECRETASSPKSQREINADIKRKLVKELRCVQK YEKIFEMLEGVQGPTAVRKRFFESIIEAARCMRRDFVKHLKLLKRLMI TR TRPLEQKLISEEDLAANDILDYKDDDDKV
Tag:	C-Myc/DDK
Purity:	> 80% as determined by SDS-PAGE and Coomassie blue staining
Concentration:	>0.05 µg/µL as determined by microplate BCA method
Labeling Method:	Labeled with [U- ¹³ C ₆ , ¹⁵ N ₄]-L-Arginine and [U- ¹³ C ₆ , ¹⁵ N ₂]-L-Lysine
Buffer:	25 mM Tris-HCl, 100 mM glycine, pH 7.3
Storage:	Store at -80°C. Avoid repeated freeze-thaw cycles.
Stability:	Stable for 3 months from receipt of products under proper storage and handling conditions.
RefSeq:	NP_001017417
RefSeq Size:	1008
RefSeq ORF:	567
Synonyms:	CT45; CT45-1; CT45.1
Locus ID:	541466
UniProt ID:	Q5HYN5



[View online »](#)

Cytogenetics: Xq26.3

Product images:



Coomassie blue staining of purified CT45A1 protein (Cat# [TP314947]). The protein was produced from HEK293T cells transfected with CT45A1 cDNA clone (Cat# [RC214947]) using MegaTran 2.0 (Cat# [TT210002]).