

Product datasheet for PH314928

IGF1 Receptor (IGF1R) (NM_000875) Human Mass Spec Standard

Product data:

Product Type:	Mass Spec Standards
Description:	IGF1R MS Standard C13 and N15-labeled recombinant protein (NP_000866)
Species:	Human
Expression Host:	HEK293
Expression cDNA Clone or AA Sequence:	RC214928
Predicted MW:	154.79 kDa
Protein Sequence:	>RC214928 representing NM_000875 Red=Cloning site Green=Tags(s)

MKSGSGGGSPSTLWGLLFLSAALSLWPTSGEICGPGIDIRNDYQQLKRLNCTVIEGYLHILLISKAEDY
RSYRFPKLTVITEYLLLFVAGLESGLDFPNLTVIRGWKLFYNYALVIFEMTNLKDIGLYNLRNITRGA
IRIEKNADLCYLSTVDWSLILDVSNNYIVGNKPPKECGDLCPGTMEEKPMCEKTTINNEYNYRCWTTNR
CQKMCPSCTGKRACTENNECCHPECLGSCSAPDNDTACVACRHHYYAGVCPACPPNTYRFEGWRCVDRD
FCANILSAESSDSEGFVIHDGECMQECPSGFIRNGSQSMYCIPCEGPCPKVCEEEKTKTIDSVTS AQML
QGCTIFKGNLLINIRRGNNIASELENFMGLIEVVTGYVKIRHSHALVLSFLKNLRLILGEEQLEGNYSF
YVLDNQNLQQLWDWDRNLTIKAGKMYFAFNPKLCVSEIYRMEEVTGKGRQSKGDINTRNNGERASCES
DVLHFTSTTTSKNRIITWHRYRPPDYRDLISFTVYKAPFKNVTEYDGDACGSNSWNMVDVLPNPK
DVEPGILLHGLKPWTQYAVYVAVTLTMVENDHIRGAKSEILYIRTNASVPSIPLDVLASANSSSQLIVK
WNPPSLPNGLSYYIVRWRQPQDGYLYRHNYSKDKIPIRKYADGTIDIEEVTENPKTEVCGGEGKPPCC
ACPKTEAEKQAEKEEAERYKVFENFLHNSIFVPRPERKRRDVMQVANTMSSRSRNTTAADTYNITDPEE
LETEYPPFFESRVDNKERTVISNLRPFTLYRIDIHSCNHEAEKLGCSANFVFARTMPAEGADDIPGPVTW
EPRPENSIFLKWPEPENPNGLILMYEIKYGSQVEDQRECVSRQYRKYGGAKLNRLNPGNYTARIQATSL
SGNGSWTDPVFFYVQAKTYENFIHLIIALPVAVLLIVGGLVIMLYVFRHRKRNSRLGNGVLYASVNPEY
FSAADVVPDEWEVAREKITMSRELQGSFGMVYEGVAKGVKDEPETRVAIKTVNEAASMRERIEFLNE
ASYMKEFNCHHVVRLLGVVSQGQPTLVIMELMTRGDLKSYLRSLRPEMENNPNLAPPSSKMIQAGEIA
DGMAYLNANKFVHRDLAARNCMVAEDFTVIGDFGMTRDIYETDYRKGKGLLPVRWMSPESLKDGVFT
TYSDVWSFGVVLWEIATLAEQPYQGLSNEQVLRVMEGGLLDKPDNCPDMLFELMRMCWQYNPKMRPSFL
EIISSIKEEMEPGFREVSFYSEENKLEPEEELDLEPENMESVPLDPSASSSSLPLPDRHSGHKAENGGP
PGVLVLRASFDERQPYAHMNGGRKNERALPLPQSSTC

TRTRPLEQKLI SEEDLAANDILDYKDDDDKV

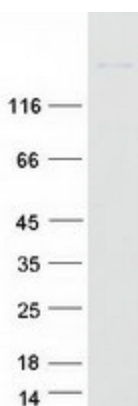
Tag:	C-Myc/DDK
Purity:	> 80% as determined by SDS-PAGE and Coomassie blue staining
Concentration:	>0.05 µg/µL as determined by microplate BCA method



[View online >](#)

Labeling Method:	Labeled with [U- ¹³ C ₆ , ¹⁵ N ₄]-L-Arginine and [U- ¹³ C ₆ , ¹⁵ N ₂]-L-Lysine
Buffer:	25 mM Tris-HCl, 100 mM glycine, pH 7.3
Storage:	Store at -80°C. Avoid repeated freeze-thaw cycles.
Stability:	Stable for 3 months from receipt of products under proper storage and handling conditions.
RefSeq:	NP_000866
RefSeq Size:	4989
RefSeq ORF:	4101
Synonyms:	CD221; IGFR; IGFR; JTK13
Locus ID:	3480
UniProt ID:	P08069
Cytogenetics:	15q26.3
Summary:	This receptor binds insulin-like growth factor with a high affinity. It has tyrosine kinase activity. The insulin-like growth factor I receptor plays a critical role in transformation events. Cleavage of the precursor generates alpha and beta subunits. It is highly overexpressed in most malignant tissues where it functions as an anti-apoptotic agent by enhancing cell survival. Alternatively spliced transcript variants encoding distinct isoforms have been found for this gene. [provided by RefSeq, May 2014]
Protein Families:	Druggable Genome, Protein Kinase, Transmembrane
Protein Pathways:	Adherens junction, Colorectal cancer, Endocytosis, Focal adhesion, Glioma, Long-term depression, Melanoma, Oocyte meiosis, Pathways in cancer, Progesterone-mediated oocyte maturation, Prostate cancer

Product images:



Coomassie blue staining of purified IGF1R protein (Cat# [TP314928]). The protein was produced from HEK293T cells transfected with IGF1R cDNA clone (Cat# [RC214928]) using MegaTran 2.0 (Cat# [TT210002]).