

Product datasheet for PH314911

ATP2A1 (NM_173201) Human Mass Spec Standard

Product data:

Product Type:	Mass Spec Standards
Description:	ATP2A1 MS Standard C13 and N15-labeled recombinant protein (NP_775293)
Species:	Human
Expression Host:	HEK293
Expression cDNA Clone or AA Sequence:	RC214911
Predicted MW:	110.1 kDa
Protein Sequence:	>RC214911 representing NM_173201 Red=Cloning site Green=Tags(s)

MEAAHAKTTEECLAYFGVSETTGLTPDQVQRNLEKYGLNELPAEEGKTLWELVIEQFEDLLVRILLAAC
ISFVLAWFEEGEETITAFVEPFVILLILIANAIIVGVWQERNAENAIEALKEYEPEMGKVYRDRKSVQRI
KARDIVPGDIVEVAVGDKVPADIRILAIKSTTLRVDQSILTGESVSVIKHTEPVPDPRAVNQDKKNMLFS
GTNIAAGKALGIVATTGVGTEIGKIRDQMAATEQDKTPLQKQLDEFGEQLSKVISLICVAVWLINIGHFN
DPVHGGSWFRGAIYYFKIAVALAVAAIPEGLPAVITTCALGTRRMAKKNAIVRSLPSVETLGCSTVICS
DKTGTLTTNQMSVCKMFIIDKVDGDI CLLNEFSITGSTYAPEGEVLKNDKPVRPGQYDGLVELATICALC
NDSSLDNFNEAKGVYEKVGAEATETALTTLVEKMNVFNTDVRSLSKVERANACNSVIRQLMKKEFTLEFSRD
RKSMSVYCSPAKSSRAAVGNKMFVKGAPGVIDRCNYVRVGTTRVPLTGPVKEKIMAVIKEWGTGRDTRL
CLALATRDTPPKREEMVLDD SARFLEYETDLTFVGVVGM LDPPRKEVTGSIQLCRDAGIRVIMITGDNKG
TATAICRRIGIFGENEEVADRAYTGREFDDLPLAEQREACRRACCFARVEPSHKSKIVEYLQSYDEITAM
TGDGVNDAPALKKAEIGIAMSGTAVAKTASEMVLADDNFSTIVA AVEEGRAIYNNMKQFIRYLISSNVG
EVCIFLTAALGLPEALIPVQLLWVNLVTDGLPATALGFNPPDLIDMRPPRSPKEPLISGWLFFRYMAI
GGYVGAATVGA AAWFLYAEDGPHVNSQLTHFMQCTEDNTHFEGIDCEVFEAPEPMTMALSVLVTIEMC
NALNSLSENQSLLRMPWPVNIWLLGSICLSMSLHFLILYVDPLPMIFKLRALDLTQWLMVLKISLPVIGL
DEILKFVARNYLEDPEDERRK

TRTRPLEQKLI SEEDLAANDILDYKDDDDKV

Tag:	C-Myc/DDK
Purity:	> 80% as determined by SDS-PAGE and Coomassie blue staining
Concentration:	>0.05 µg/µL as determined by microplate BCA method
Labeling Method:	Labeled with [U- ¹³ C ₆ , ¹⁵ N ₄]-L-Arginine and [U- ¹³ C ₆ , ¹⁵ N ₂]-L-Lysine
Buffer:	25 mM Tris-HCl, 100 mM glycine, pH 7.3
Storage:	Store at -80°C. Avoid repeated freeze-thaw cycles.



[View online »](#)

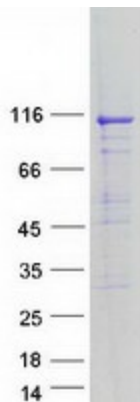
Stability:	Stable for 3 months from receipt of products under proper storage and handling conditions.
RefSeq:	NP_775293
RefSeq Size:	3528
RefSeq ORF:	3003
Synonyms:	ATP2A; SERCA1
Locus ID:	487
UniProt ID:	O14983 , Q7Z675
Cytogenetics:	16p11.2

Summary: This gene encodes one of the SERCA Ca(2+)-ATPases, which are intracellular pumps located in the sarcoplasmic or endoplasmic reticula of muscle cells. This enzyme catalyzes the hydrolysis of ATP coupled with the translocation of calcium from the cytosol to the sarcoplasmic reticulum lumen, and is involved in muscular excitation and contraction. Mutations in this gene cause some autosomal recessive forms of Brody disease, characterized by increasing impairment of muscular relaxation during exercise. Alternative splicing results in three transcript variants encoding different isoforms. [provided by RefSeq, Oct 2013]

Protein Families: Druggable Genome, Transmembrane

Protein Pathways: Alzheimer's disease, Calcium signaling pathway

Product images:



Coomassie blue staining of purified ATP2A1 protein (Cat# [TP314911]). The protein was produced from HEK293T cells transfected with ATP2A1 cDNA clone (Cat# [RC214911]) using MegaTran 2.0 (Cat# [TT210002]).