

Product datasheet for PH314880

LHFPL2 (NM_005779) Human Mass Spec Standard

Product data:

| | |
|---------------------------------------|---|
| Product Type: | Mass Spec Standards |
| Description: | LHFPL2 MS Standard C13 and N15-labeled recombinant protein (NP_005770) |
| Species: | Human |
| Expression Host: | HEK293 |
| Expression cDNA Clone or AA Sequence: | RC214880 |
| Predicted MW: | 24.3 kDa |
| Protein Sequence: | >RC214880 representing NM_005779 Red=Cloning site Green=Tags(s) MCHVIVTCRSMWLWLLSIVVAFELIAFMSADWLI GKARSRGVPEPAGPGGGSPEPYHPTLGIYARCIRN PGVQHFQRDTLCGPYAESFGIEIASGFWQATAIFLAVGIFILCMVALVSVFTMCVQSIMKKSIFNVCGLLQ GIAGLFLILGLILYPAGWGCQKAIDYCGHYASAYKPGDCSLGWAFYTAIGGTVLTFICAVFSAQAEIATS SDKVQEEIEEGKNLICLL TRTRPLEQKLI SEEDLAANDILDYKDDDDKV |
| Tag: | C-Myc/DDK |
| Purity: | > 80% as determined by SDS-PAGE and Coomassie blue staining |
| Concentration: | >0.05 µg/µL as determined by microplate BCA method |
| Labeling Method: | Labeled with [U- ¹³ C ₆ , ¹⁵ N ₄]-L-Arginine and [U- ¹³ C ₆ , ¹⁵ N ₂]-L-Lysine |
| Buffer: | 25 mM Tris-HCl, 100 mM glycine, pH 7.3 |
| Storage: | Store at -80°C. Avoid repeated freeze-thaw cycles. |
| Stability: | Stable for 3 months from receipt of products under proper storage and handling conditions. |
| RefSeq: | NP_005770 |
| RefSeq Size: | 4448 |
| RefSeq ORF: | 684 |
| Locus ID: | 10184 |
| UniProt ID: | Q6ZUX7 , A0A024RAM8 |
| Cytogenetics: | 5q14.1 |



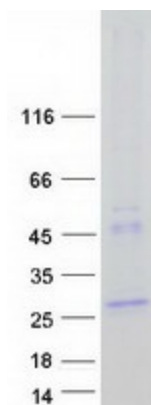
[View online »](#)

Summary:

This gene is a member of the lipoma HMGIC fusion partner (LHFP) gene family, which is a subset of the superfamily of tetraspan transmembrane protein encoding genes. Mutations in one LHFP-like gene result in deafness in humans and mice, and a second LHFP-like gene is fused to a high-mobility group gene in a translocation-associated lipoma. Alternatively spliced transcript variants have been found, but their biological validity has not been determined. [provided by RefSeq, Jul 2008]

Protein Families:

Transmembrane

Product images:

Coomassie blue staining of purified LHFPL2 protein (Cat# [TP314880]). The protein was produced from HEK293T cells transfected with LHFPL2 cDNA clone (Cat# [RC214880]) using MegaTran 2.0 (Cat# [TT210002]).