

## Product datasheet for PH314877

### EGFR (NM\_201283) Human Mass Spec Standard

#### Product data:

Product Type:	Mass Spec Standards
Description:	EGFR MS Standard C13 and N15-labeled recombinant protein (NP_958440)
Species:	Human
Expression Host:	HEK293
Expression cDNA Clone or AA Sequence:	RC214877
Predicted MW:	42.4 kDa
Protein Sequence:	>RC214877 representing NM_201283 Red=Cloning site Green=Tags(s)  MRPSGTAGAALLALLAALCPASRALEEKKVCQGTSNKLTQLGTFEDHFLSLQRMFNCEVVLGNLEITYV QRNYDL SFLKTIQEVAGYVLIALNTVERIPL ENLQIIRGNMYE NSYALAVLSNYDANKTGLKELPMRNL QEILHGAVRFSNNPALCNVESIQWRDIVSSDFLSNMSMDFQNH LGSCQKCDPSCPNGSCWGAGEENCQKL TKIICAQQCSGRCRGKSPSDCCHNQCAAGCTGPRES DCLVCRKFRDEATCKDTCPLMLYNPTTYQMDVN PEGKYSFGATCVKKCPRNYVVDH GSCVRACGADSYEMEEDGVRKCKKCEGPCRKVCNGIGIGEFKDSLS INATNIKHFKNCTISGDLHILPVAFRGDSFHTHPPLDPQELDILKTVKEITGLS  TRTRPLEQKLI SEEDLAANDILDYKDDDDKV
Tag:	C-Myc/DDK
Purity:	> 80% as determined by SDS-PAGE and Coomassie blue staining
Concentration:	>0.05 µg/µL as determined by microplate BCA method
Labeling Method:	Labeled with [U- <sup>13</sup> C <sub>6</sub> , <sup>15</sup> N <sub>4</sub> ]-L-Arginine and [U- <sup>13</sup> C <sub>6</sub> , <sup>15</sup> N <sub>2</sub> ]-L-Lysine
Buffer:	25 mM Tris-HCl, 100 mM glycine, pH 7.3
Storage:	Store at -80°C. Avoid repeated freeze-thaw cycles.
Stability:	Stable for 3 months from receipt of products under proper storage and handling conditions.
RefSeq:	<a href="#">NP_958440</a>
RefSeq Size:	1595
RefSeq ORF:	1215
Synonyms:	ERBB; ERBB1; ERRP; HER1; mENA; NISBD2; PIG61
Locus ID:	1956



[View online »](#)

UniProt ID: [P00533](#)

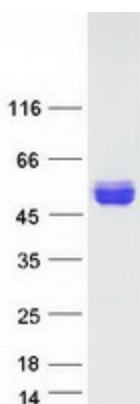
Cytogenetics: 7p11.2

**Summary:** The protein encoded by this gene is a transmembrane glycoprotein that is a member of the protein kinase superfamily. This protein is a receptor for members of the epidermal growth factor family. EGFR is a cell surface protein that binds to epidermal growth factor, thus inducing receptor dimerization and tyrosine autophosphorylation leading to cell proliferation. Mutations in this gene are associated with lung cancer. EGFR is a component of the cytokine storm which contributes to a severe form of Coronavirus Disease 2019 (COVID-19) resulting from infection with severe acute respiratory syndrome coronavirus-2 (SARS-CoV-2). [provided by RefSeq, Jul 2020]

**Protein Families:** Adult stem cells, Cancer stem cells, Druggable Genome, ES Cell Differentiation/IPS, Protein Kinase, Secreted Protein, Stem cell relevant signaling - JAK/STAT signaling pathway, Transmembrane

**Protein Pathways:** Adherens junction, Bladder cancer, Calcium signaling pathway, Colorectal cancer, Cytokine-cytokine receptor interaction, Dorso-ventral axis formation, Endocytosis, Endometrial cancer, Epithelial cell signaling in Helicobacter pylori infection, ErbB signaling pathway, Focal adhesion, Gap junction, Glioma, GnRH signaling pathway, MAPK signaling pathway, Melanoma, Non-small cell lung cancer, Pancreatic cancer, Pathways in cancer, Prostate cancer, Regulation of actin cytoskeleton

### Product images:



Coomassie blue staining of purified EGFR protein (Cat# [TP314877]). The protein was produced from HEK293T cells transfected with EGFR cDNA clone (Cat# [RC214877]) using MegaTran 2.0 (Cat# [TT210002]).