

Product datasheet for PH314867

Cadherin like 26 (CDH26) (NM_177980) Human Mass Spec Standard

Product data:

Product Type:	Mass Spec Standards
Description:	CDH26 MS Standard C13 and N15-labeled recombinant protein (NP_817089)
Species:	Human
Expression Host:	HEK293
Expression cDNA Clone or AA Sequence:	RC214867
Predicted MW:	92.2 kDa
Protein Sequence:	>RC214867 representing NM_177980 Red=Cloning site Green=Tags(s)

MAMRSGRHPSLLLLLVLLWLLQVSIIDSQQETDDLTKQTKKEIYQPLRRSKRRWVITTELEEEEDPGP
FPKLIGELFNNMSYNMSLMYLSGPGVDEYPEIGLFSLEDHENGRIYVHRPVDREMTSPFTVYFDVVERS
TGKIVDTSLIFNIRISDVNDHAPQFPEKEFNITVQENQSAGQPIFQMLAVDLDEENTPNSQVLYFLISQT
PLLKESGFRVDRLSGEIRLSGCLDYETAPQFTLLIRARDCGEPSSSTTTVHVDVQEGNNHRPAFTQENY
KVQIPEGRASQGVRLRLVQDRDSPFTSAWRKFNILHGNEEGHFDISTDPETNEGILNVIKPLDYETRPA
QSLIIVVENEERLVFCERGLQPPRKAASATVSVQVTDANDPPAFHPQSFIVNKEEGARPGTLLGTFNA
MDPDSQIRYELVHDPANWVSVDKNSGVVITVEPIDRESPHVNNSFYVIIHAVDDGFPPQTATGTLMLFL
SDINDNVPTLRPSRYMEVCESAVHEPLHIEAEDPDLEPFSDPFTFELDNTWGNAEDTWKLRNNGQSV
LLTLRSLPRGNYLVPLFIGDKQLSQKQTVHVRICPCASGLTCVELADAEVGLHVGALFPVCAAFVALAV
ALLFLLRCYFVLEPKRHGCSVSNDEGHQTLVMYNAESKGTSAQTWSDVEGQRPALLICTAAAGPTQGVKD
LEEVPPSAASQSAQARCALGSWGYGKPFEPKSVKNIHSTPAYPDATMHRQLLAPVEGRMAETLNQKLHVA
NVLEDDPGYLPHYVSEEGECGAPSLSSLASLEQELQPDLLDSLGSKATPFEEIYSESGVPS

TRTRPLEQKLISEEDLAANDILDYKDDDDKV

Tag:	C-Myc/DDK
Purity:	> 80% as determined by SDS-PAGE and Coomassie blue staining
Concentration:	>0.05 µg/µL as determined by microplate BCA method
Labeling Method:	Labeled with [U- ¹³ C ₆ , ¹⁵ N ₄]-L-Arginine and [U- ¹³ C ₆ , ¹⁵ N ₂]-L-Lysine
Buffer:	25 mM Tris-HCl, 100 mM glycine, pH 7.3
Storage:	Store at -80°C. Avoid repeated freeze-thaw cycles.
Stability:	Stable for 3 months from receipt of products under proper storage and handling conditions.
RefSeq:	<u>NP_817089</u>



[View online »](#)

RefSeq Size: 3192

RefSeq ORF: 2496

Synonyms: VR20

Locus ID: 60437

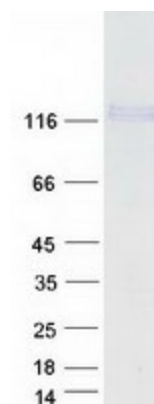
UniProt ID: [Q8IXH8](#)

Cytogenetics: 20q13.33

Summary: This gene encodes a member of the cadherin protein family. Cadherins are a family of calcium-dependent adhesion molecules that mediate cell-cell adhesion in all solid tissues and modulate a wide variety of processes, including cell polarization, migration and differentiation. Cadherin domains occur as repeats in the extracellular region and are thought to contribute to the sorting of heterogeneous cell types and the maintenance of orderly structures such as epithelium. This protein is expressed in gastrointestinal epithelial cells and may be upregulated during allergic inflammation. This protein interacts with alpha integrins and may also be involved in leukocyte migration and adhesion. [provided by RefSeq, Jan 2017]

Protein Families: Transmembrane

Product images:



Coomassie blue staining of purified CDH26 protein (Cat# [TP314867]). The protein was produced from HEK293T cells transfected with CDH26 cDNA clone (Cat# [RC214867]) using MegaTran 2.0 (Cat# [TT210002]).