

Product datasheet for PH314839

XPO6 (NM_015171) Human Mass Spec Standard

Product data:

Product Type:	Mass Spec Standards
Description:	XPO6 MS Standard C13 and N15-labeled recombinant protein (NP_055986)
Species:	Human
Expression Host:	HEK293
Expression cDNA Clone or AA Sequence:	RC214839
Predicted MW:	128.9 kDa
Protein Sequence:	>RC214839 protein sequence Red=Cloning site Green=Tags(s)

MASEEASLRALESLMTEFFHDCCTNERKREIEELLNFAQQIGAWRFCLYFLSSTRNDYVMMYSLTVFEN
L INKMWLGVP SQDKMEIRSCLPKLLLAHHTLPYFIRNKLCVKIVDIGRQDWPMFYHDFFTNILQLIQSP
VTTPLGLIMLKTSEELACPREDL SVARKEELRKL LLDQVQTVLGLL TGIETVWDKHSVTAATPPPSPT
SGESGDLLSNLLQSPSSAKLLNQPIPIILDVESEYICSLALECLAHLFSWIPLSASITPSLLTTIFHFARF
GCDIRARKMASVNGSSQNCVSGQERGLGVLAMSCINELMSKNCVPMFEFEEYLLRMFQQTFFYLLQKITKD
NNAHTVKSRLEELDESYIEKFTDFLRLFVSVHLRRIESYSQFPVVEFLTLLFKYTFHQPTHEGYFSCLDI
WTLFLDYLT SKIKSRLGDKEAVLNRYEDALVLLL TEVLNRIQFRYNQAQLEELDDETLDDDQQTETWQRYL
RQSLLEVAKVMELLPTHAFSTLFPVLQDNLEVYLGQQFIVTSGSGHRLNITAENDCRRLHC SLRDLSSL
LQAVGRLAEYF IGDFVFAARFNDALTVVERLVKVTLYGSQIKLYNIETAVPSVLKPDLDIVHAQSLAALQA
YSHWLAQYCSEVHRQNTQQFVTLI STTMDAITPLISTKVQDKLLSACHLLVSLATTVRPVFLISIPAVQ
KVFNRITDASALRLVDKAQVLVCRALSNILLPWPNL PENEQQWPVRSINHASLISALSRDYRNLPKPSAV
APQRKMP LDDTKLIIHQTL SVLEDIVENISGESTKSRQICYQLQESVQVSLALFPAFIHQSDVTDEMLS
FFLTLFRGLRVQMGVPPFTEQIIQTFLNMF TREQLAESILHEGSTGCRVVEKFLKILQVVVQEPGQVFKPF
LPSIIALCMEQVYPIIAERPSPDVKAELFELLFRTLHHNWRYYFKSTV LASVQRGIAEEQ MENEPQFSAI
MQAFGQSFLQPD IHLFKQNL FYLET LNTKQKLYHKKIFRTAML FQFVNVLLQVLVHKSHDLLQEEIGIAI
YNMASVDFDGFFAAFLPEFLTSCDGDANQKSVLGRNFKMDRDLPSFTQNVHRLVNDLRYRRLCNDLSP
GTVKL

TRTRPLEQKLISEEDLAANDILDYKDDDDKV

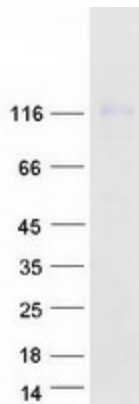
Tag:	C-Myc/DDK
Purity:	> 80% as determined by SDS-PAGE and Coomassie blue staining
Concentration:	>0.05 µg/µL as determined by microplate BCA method
Labeling Method:	Labeled with [U- ¹³ C ₆ , ¹⁵ N ₄]-L-Arginine and [U- ¹³ C ₆ , ¹⁵ N ₂]-L-Lysine
Buffer:	25 mM Tris-HCl, 100 mM glycine, pH 7.3



[View online »](#)

Storage:	Store at -80°C. Avoid repeated freeze-thaw cycles.
Stability:	Stable for 3 months from receipt of products under proper storage and handling conditions.
RefSeq:	NP_055986
RefSeq Size:	4504
RefSeq ORF:	3375
Synonyms:	EXP6; RANBP20
Locus ID:	23214
UniProt ID:	Q96QU8
Cytogenetics:	16p12.1
Summary:	The protein encoded by this gene is a member of the importin-beta family. Members of this family are regulated by the GTPase Ran to mediate transport of cargo across the nuclear envelope. This protein has been shown to mediate nuclear export of profilin-actin complexes. A pseudogene of this gene is located on the long arm of chromosome 14. Alternative splicing results in multiple transcript variants that encode different protein isoforms. [provided by RefSeq, Aug 2012]

Product images:



Coomassie blue staining of purified XPO6 protein (Cat# [TP314839]). The protein was produced from HEK293T cells transfected with XPO6 cDNA clone (Cat# [RC214839]) using MegaTran 2.0 (Cat# [TT210002]).