

Product datasheet for PH314811

MTMR2 (NM_201281) Human Mass Spec Standard

Product data:

Product Type:	Mass Spec Standards
Description:	MTMR2 MS Standard C13 and N15-labeled recombinant protein (NP_958438)
Species:	Human
Expression Host:	HEK293
Expression cDNA Clone or AA Sequence:	RC214811
Predicted MW:	65.8 kDa
Protein Sequence:	>RC214811 representing NM_201281 Red=Cloning site Green=Tags(s)

MEEPPLLPGENIKDMAKDVTYICPFTGAVRGTLLVTNYRLYFKSMERDPPFVLDASLGVINRVEKIGGAS
SRGENSYGLETVCCKDIRNLRFAHKPEGRRSIFENLMKYAFPVSNLPLFAFEYKEVFPENGWKLVDPL
LEYRRQGIPNESWRITKINERYELCDTYPALLVVPANIPDEELKRVASFRSRGRIPVLSWIHPESQATIT
RCSQPMVGVSGKRSKEDEKYLQAIMDSNAQSHKIFIFDARPSVNAVANKAKGGGYESEDAYQNAELVFLD
IHNIHVMRESLRKLKEIVYPNIEETHWLSNLESTHWLEHIKLIAGALRIADKVESGKTSVVVHCSDGWD
RTAQLTSLAMLMLDGYRTIRGFEVLVEKEWLSFGHRFQLRVGHGDKNHADADRSPVFLQFIDCVWQMT
QFPTAFEFNEYFLITILDHLYSCLFGTFLCNSEQQRGKENLPKRTVSLWSYINSQLEDFTNPLYGSYSNH
VLYPVASMRHLELWVGYYIRWNPMPKQEPHNRKELAKRAELQKQVEELQREISNRSTSSSERASSP
AQCVPVQTVV

TRTRPLEQKLISEEDLAANDILDYKDDDDKV

Tag:	C-Myc/DDK
Purity:	> 80% as determined by SDS-PAGE and Coomassie blue staining
Concentration:	>0.05 µg/µL as determined by microplate BCA method
Labeling Method:	Labeled with [U- 13C6, 15N4]-L-Arginine and [U- 13C6, 15N2]-L-Lysine
Buffer:	25 mM Tris-HCl, 100 mM glycine, pH 7.3
Storage:	Store at -80°C. Avoid repeated freeze-thaw cycles.
Stability:	Stable for 3 months from receipt of products under proper storage and handling conditions.
RefSeq:	<u>NP_958438</u>
RefSeq Size:	4565
RefSeq ORF:	1713



[View online »](#)

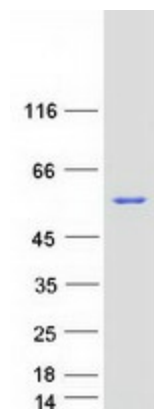
Synonyms: CMT4B; CMT4B1
Locus ID: 8898
UniProt ID: [Q13614](#), [A0A024R3B7](#)
Cytogenetics: 11q21

Summary: This gene is a member of the myotubularin family of phosphoinositide lipid phosphatases. The encoded protein possesses phosphatase activity towards phosphatidylinositol-3-phosphate and phosphatidylinositol-3,5-bisphosphate. Mutations in this gene are a cause of Charcot-Marie-Tooth disease type 4B, an autosomal recessive demyelinating neuropathy. Alternatively spliced transcript variants encoding multiple isoforms have been found for this gene. [provided by RefSeq, Aug 2011]

Protein Families: Druggable Genome, Phosphatase

Protein Pathways: Fructose and mannose metabolism, Metabolic pathways, Riboflavin metabolism, Thiamine metabolism

Product images:



Coomassie blue staining of purified MTMR2 protein (Cat# [TP314811]). The protein was produced from HEK293T cells transfected with MTMR2 cDNA clone (Cat# [RC214811]) using MegaTran 2.0 (Cat# [TT210002]).