

Product datasheet for PH314790

MAML1 (NM_014757) Human Mass Spec Standard

Product data:

Product Type:	Mass Spec Standards
Description:	MAML1 MS Standard C13 and N15-labeled recombinant protein (NP_055572)
Species:	Human
Expression Host:	HEK293
Expression cDNA Clone or AA Sequence:	RC214790
Predicted MW:	107.9 kDa
Protein Sequence:	>RC214790 representing NM_014757 Red=Cloning site Green=Tags(s)

MVLPTCPMAEFALPRHSAMERLRRRIELCRRHSTCEARYEAVSPERLELERQHTFALHQRICIQAKAKR
AGKHRQPPAATAPAPAAPAPRLDAADGPEHGRPATHLHDTVKNRLDSATSPQNGDQNGYGDLPFGHKKT
RREAPLGVAISSNGLPPASPLGQSDKPSGADALQSSGKHSGLDSLNNKRLADSSLHLNGGSNPSESFPL
SLNKEKQEPVEDLPCMITGTGSGISQSNLMPDLNLEQEWKELIEELNRSVPDEDMKDLFNEDEEKKD
PESSGSATQTPLAQDINIKTEFSPAAFEQEQLGSPQVRAGSAGQTFLGPSSAPVSTDSPSLGGSQTLFHT
SGQPRADNPSPNLMPSAQAQNAQRALAGVVLPSQGGGASELSSAHLQQIAAKQKREQMLQNPQQATP
APAPGQMSTWQQTGPHSSLDVYPMEKPASPSSYKQDF TNSKLLMMPVSNKSSPRPGPYLQPSHVNLL
SHQPPSNLNQNSANNQGSVLDYGNTPKPLSHYKADCGGSPGSGQSKPALMAYLPQQLSHISHEQNSLFLM
KPKPGNMPFRSLVPPGQEQNPSSVPVQAQATSVGTQPPAVSVASSHNSPYLSSQQQAAMKQHQLLLDQ
QKQREQQQKHLQQQQFLQRQQHLLAEQEKQQFQRHLTRPPPQYQDPTQGSFPQQVQFTGSSAAVPMNT
LGPSNSSCPRVFPQAGNLMMPGPGHASVSSLPTNSGQDRGVAQFPGSQNMPQSSLYGMASGITQIVAQP
PPQATNGHAHPRQTNVGNQNTSVSAAVGNLSGSSGLSQQHNGKTLNPLTKPPVPRVSPAMGGQNSSWQ
HQGMPNLSGQTPGNSNVSPFTAASSFHMQQQAHLKMSPPQFSQAVPNRPMAMSSAAAAGSLLPPVSAQQ
RTSAPAPAPPPTAPQQGLPGLSPAGPELGAFSQSPASQMGGGRAGLHCTQAYPVRTAGQELPFAYSGQPGG
SGLSSVAGHTDLIDSLLNKRTSEEWMSDLDLGGSQ

TRTRPLEQKLISEEDLAANDILDYKDDDDKV

Tag:	C-Myc/DDK
Purity:	> 80% as determined by SDS-PAGE and Coomassie blue staining
Concentration:	>0.05 µg/µL as determined by microplate BCA method
Labeling Method:	Labeled with [U- ¹³ C ₆ , ¹⁵ N ₄]-L-Arginine and [U- ¹³ C ₆ , ¹⁵ N ₂]-L-Lysine
Buffer:	25 mM Tris-HCl, 100 mM glycine, pH 7.3
Storage:	Store at -80°C. Avoid repeated freeze-thaw cycles.



[View online »](#)

Stability: Stable for 3 months from receipt of products under proper storage and handling conditions.

RefSeq: [NP_055572](#)

RefSeq Size: 5745

RefSeq ORF: 3048

Synonyms: Mam-1; Mam1

Locus ID: 9794

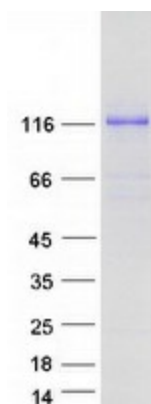
UniProt ID: [Q92585](#)

Cytogenetics: 5q35.3

Summary: This protein is the human homolog of mastermind, a Drosophila protein that plays a role in the Notch signaling pathway involved in cell-fate determination. There is in vitro evidence that the human homolog forms a complex with the intracellular portion of human Notch receptors and can increase expression of a Notch-induced gene. This evidence supports its proposed function as a transcriptional co-activator in the Notch signaling pathway. [provided by RefSeq, Jul 2008]

Protein Pathways: Notch signaling pathway

Product images:



Coomassie blue staining of purified MAML1 protein (Cat# [TP314790]). The protein was produced from HEK293T cells transfected with MAML1 cDNA clone (Cat# [RC214790]) using MegaTran 2.0 (Cat# [TT210002]).