

Product datasheet for PH314781

Stabilin 2 (STAB2) (NM_017564) Human Mass Spec Standard

Product data:

Product Type:	Mass Spec Standards
Description:	STAB2 MS Standard C13 and N15-labeled recombinant protein (NP_060034)
Species:	Human
Expression Host:	HEK293
Expression cDNA Clone or AA Sequence:	RC214781
Predicted MW:	276.99 kDa



[View online »](#)

Protein Sequence: >RC214781 representing NM_017564
 Red=Cloning site Green=Tags(s)

MMLQHLVIFCLGLVVQNFCSPAETTGQARRCDRKSLLTIRTECRSCALNLGVKCPDGYTMITSGSVGVDR
 CRYTFEVRTYSLSLPGCRHICRKDYLPQRCCPGRWGPDCIECPGGAGSPCNGRGS CAEGMEGNGTCSCQE
 FGGGTACETCADDNLFPGSCSSVCNCVHGV CNSGLDGDGTCECYSAYTGPCKDKPIPECAALLCPENSRC
 SPSTEDENKLECKCLPNYRGDGKYCDP INPCLRKICHPHAHCTYLGPNRHSCTCQEGYRGDGVCLPVDP
 CQINFGNCPTKSTVCKYDGPQSHCECKEYQNFVPGVGC SMTDICKSDNPCHRANCTTVAPGRTECIC
 QKGYVGDGLTCYGNIMERLRELNTEPRGWQGR LTSFISLLDKAYAWPLSKLGPFTVLLPTDKGLKGFNV
 NELLVDNKAAYFVKLHIIAGQMNI EYMNNTDMFYTLTGKSGEIFNSDKDNQIKLKLHGGKVKV KIIQGD
 I IASNGLLHILDRAMDKLEPTFESNNEQTIMTMLQPRYSKFRSLLEETNLGHALDEDEGVGGPYTIFVPNN
 EALNNMKDGLDYLLSPEGRKLELVRVHIVPFTQLEVATLISTPHIRSMANQLIQFNTTDNGQILAND
 VAMEEIEITAKNGRIYTLTGVLIPPSIVPILPHRCDETKREMKGTCVSCSLVYWSRCPANSEPTALFTH
 RCVYSGRFGSLKSGCARYCNATVKIPKCKGFYGPDCNQCPGGF SNPCSGNGQCADSLGGNGTCICEEGF
 QGSQCQFCSDPNKYGP RCNKKCLCVHGTCNNRIDS DGA CLTGTCRDGSAGRLCDKQTSACGPYVQFCHIH
 ATCEYSNGTASCICKAGYEGDGLTLCSEMDPCTGLTPGGCSRNAECIKTGTGHTCVCVQQWGTGNGRDCSE
 INNCLLPSAGGCHDNASCLYVGPQNECECKKGF RGNIDCEPITSCLEQTGKCHPLASCQSTSSGVWSC
 VCQEGYEGDGF L CYGNAAVELSFLSEAAIFNRWINNASLQPTLSATSNLTVLVPSQQATEDMDQDEKSF
 LSQSNIPALIKYHMLLTGYRVADLQTLSSSDMLATSLQGNFLHLAKVDGNITIEGASIVDGDNAATNGVI
 HIINKVLVPQRRLTGSLPNLLMRLEQMPDYSIFRGYIIQYNLANAIEAADAYTVFAPNNAIENYIREKK
 VLSLEEDVLRVHVLEEKLLKNDLHNGMHRETMLGFSYFLSFFLHNDQLYVNEAPINYNVATDKGVIHG
 LGKYLEIQKNRCDNNDTTIIRGR CRTCSSELTCPFGTKSLGNEKRRCIYTSYFMGRRTLFIGCQPKCVRT
 VITRECCAGFFGPGQCQPCPGNAQNVCFNGI CLDGVNGTGVCECGEGFSGTACETCTEGYIHCDDQACS
 CVHGRCNQGPLDGDGSCDVGWRGVHCDNATTEDNCNGTCHTSANCLTNSDGTASCKCAAGFQGNGTICT
 AINACEISNGGCSAKADCKRTPGRRVCTCKAGYTG DGI VCLEINPCLENHGGCDKNAECTQTGNQAAC
 NCLPAYTGDGKVCTLINVCLTKNGGCSEFAICNHTGQVERTCTCKPNYIGDGFTRCGSIYQELPKNPKTS
 QYFFQLQEHFVKDLVGGPFTVFAPLSAAFDEEARVKDWDKYGLMPQVLRVHVVACHQLLLENLKLISNA
 TSLQGEPIVIVSVSQSTVYINNKAIISSDIISTNGIVHIIDKLLSPKNLLITPKDN SGRILQNLTTLATN
 NGYIKFSNLIQDSGLLSVITDPIHTPVTLFWPTDQALHALPAEQQDFLFNQDNKDKLKEYLKFHVIRDAK
 VLAVDLPTSTAWKTLQGSEL SVKCGAGRDIGDLFLNGQTCRIVQRELLFDLGVAYGIDCLLIDPTLGGRC
 DTFTTTFDASGEGSCVNTPSCP RWSKPKGVKQKCLY NLPFKRNLEGRERCSLVIQIPRCKGYFGRDCQ
 ACPGGPDAPCNNRGVCLDQYSATGECKNTGFNGTACEMCWPGFRGPDCLPCGCSDHGQCDDGITSGSQC
 LCETGWTGPSCDTQAVLPAVCTPPCSAHATCKENNTCECNLDYEGDGITCTVVDVFCQDNGGCAKVARCS
 QKGTKVCSCSQKGYKGDGHSCTEIDPCADGLNGGCHEHATCKMTGPGKHKCECKSHYVGDGLNCEPEQLP
 IDRCLQDNGQCHADAKCVDLHFQD TT VGVFHLRSPLGQYKLTDFKAREACANEAAATMATYNQLSYAQKAK
 YHLC SAGWLETGRVAYPTAFASQNCGSGVVGIVDYGPRPNKSEMWDVFCYRMKDVNCTCKVGVGDGFSC
 SGNLLQVLMSPSLTNFLTEVLAYSNSSARGRAFLEHLTDL SIRGTLFVPQNSGLGENETLSGRDIEHHL
 ANVSMFFYNDLVNGTTLQTRLGSKLLITASQDPLQPTETRFVDGRAILQWDIFASNGIIHVISRPLKAPP
 APVTLTHTGLGAGIFFAILVTGAVALAAYS YFRINRRTIGFQHFSEEDINVAALGKQQPENISNPLYE
 STTSAPPEPSYDPFTDSEERQLEGNDPLRTL

TRTRPLEQKLISEEDLAANDILDYKDDDDKV

Tag: C-Myc/DDK

Purity: > 80% as determined by SDS-PAGE and Coomassie blue staining

Concentration: >0.05 µg/µL as determined by microplate BCA method

Labeling Method: Labeled with [U- ¹³C₆, ¹⁵N₄]-L-Arginine and [U- ¹³C₆, ¹⁵N₂]-L-Lysine

Buffer: 25 mM Tris-HCl, 100 mM glycine, pH 7.3

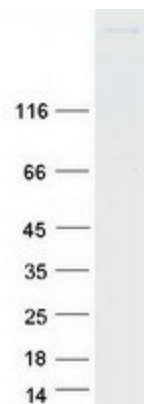
Storage: Store at -80°C. Avoid repeated freeze-thaw cycles.

Stability:	Stable for 3 months from receipt of products under proper storage and handling conditions.
RefSeq:	NP_060034
RefSeq Size:	8266
RefSeq ORF:	7653
Synonyms:	FEEL2; FELE-2; FELL2; FEX2; HARE; SCARH1
Locus ID:	55576
UniProt ID:	Q8WWQ8
Cytogenetics:	12q23.3

Summary: This gene encodes a large, transmembrane receptor protein which may function in angiogenesis, lymphocyte homing, cell adhesion, or receptor scavenging. The protein contains 7 fasciclin, 15 epidermal growth factor (EGF)-like, and 2 laminin-type EGF-like domains as well as a C-type lectin-like hyaluronan-binding Link module. The protein is primarily expressed on sinusoidal endothelial cells of liver, spleen, and lymph node. The receptor has been shown to bind and endocytose ligands such as hyaluronan, low density lipoprotein, Gram-positive and Gram-negative bacteria, and advanced glycosylation end products. Supporting its possible role as a scavenger receptor, the protein has been shown to cycle between the plasma membrane and lysosomes. [provided by RefSeq, Jul 2008]

Protein Families: Druggable Genome, Transmembrane

Product images:



Coomassie blue staining of purified STAB2 protein (Cat# [TP314781]). The protein was produced from HEK293T cells transfected with STAB2 cDNA clone (Cat# [RC214781]) using MegaTran 2.0 (Cat# [TT210002]).