

## Product datasheet for PH314776

### MYBPC1 (NM\_206821) Human Mass Spec Standard

#### Product data:

Product Type:	Mass Spec Standards
Description:	MYBPC1 MS Standard C13 and N15-labeled recombinant protein (NP_996557)
Species:	Human
Expression Host:	HEK293
Expression cDNA Clone or AA Sequence:	RC214776
Predicted MW:	126.5 kDa
Protein Sequence:	>RC214776 protein sequence Red=Cloning site Green=Tags(s)

MPEPTKKEENEVPAPAPPPPEEPSKEKEAGTTPAKDWTLVETPPGEEQAKQNANSQLSILFIEKPQGGTVK  
VGEDITFIAKVKAEDLLRKPTIKWFKGKWMDLASKAGKHLQLKETFERHSRVYTFEMQI I KAKDNFAGNY  
RCEVYTKDKFDCSFDLEVHSTGTTPNIDIRSAFKRSGEGQEDAGELDFSGLLKRREVKQEQEEEPQVDV  
WELLKNAKPSEYEKIAFQYGITDLRGLKRLKMRREEKKSAAF AKILDPAYQVDKGGVRV FVVELADPK  
LEVWKYKNGQEIRPSTKYIFEHKGQRILFINNCQMTDDSEYVVTAGDEKSTELFVREPPIMVTKQLED  
TTAYCGERVELECEVSEDDANVKWFKNGEEIIPGPKSRYRIRVEGKKHIL I IEGATKADAAEYSVMTTGG  
QSSAKLSVDLKPLKIL TPLTDQTVNLGKEICLKCEISENIPGKWTKNGLPVQESDRLKVVHKGRIHKLVI  
ANALTEDEGDYVFPDAYNVTLPAKVHVIDPPKIILDGLDADNTVTVIAGNKLRL EIPISGEPPPKAMWS  
RGDKAIMEGSGRIRTESYPDSSTLVIDIAERDDSGVYHINLKNEAGEAHASIKVKVVD FPDPPVAPT VTE  
VGDDWCIMNWEPPAYDGGSPILGYFIERKKQSSRWMLNFDLCKETT FEPKMI EGVAYEVRIFAVNAI  
GISKPSMSPRPFVPLAVTSPPTLLTVDSVTDTTVTMRWRPPDHIGAAGLDGYVLEYCFEGTEDWIVANKD  
LIDKTKFTITGLPTDAKIFVRVKAVNAAGASEPKYYSQPILVKEIEPPKIRIPRHLKQTYIRRVGEAVN  
LVIPFQKGKRPPELTWKKDGA EIDKNQINIRNSETDTIIFIRKAERSHSGKYDLQVKVDFVETASIDIQI  
IDRPGPPQIVKIEDVWGENVALTWTPPKDDGNAAITGYTIQKADKKSMEWFTVIEHYHRTSATITELVIG  
NEYFRVFS ENMCGLSEDATMTKESAVIARDGKIYKNPVYEDFDFSEAPMFTQPLVNTYAIAGYNATLNC  
SVRGNPKPKITWMKNKVAIVDDPRYRMFSNQGVC TLEIRKPSPYDGGTYCCKAVNDLGTVEIECKLEVKV  
IAQ

TRTRPLEQKLISEEDLAANDILDYKDDDDKV

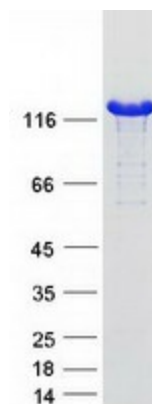
Tag:	C-Myc/DDK
Purity:	> 80% as determined by SDS-PAGE and Coomassie blue staining
Concentration:	>0.05 µg/µL as determined by microplate BCA method
Labeling Method:	Labeled with [U- <sup>13</sup> C <sub>6</sub> , <sup>15</sup> N <sub>4</sub> ]-L-Arginine and [U- <sup>13</sup> C <sub>6</sub> , <sup>15</sup> N <sub>2</sub> ]-L-Lysine
Buffer:	25 mM Tris-HCl, 100 mM glycine, pH 7.3



[View online »](#)

<b>Storage:</b>	Store at -80°C. Avoid repeated freeze-thaw cycles.
<b>Stability:</b>	Stable for 3 months from receipt of products under proper storage and handling conditions.
<b>RefSeq:</b>	<a href="#">NP_996557</a>
<b>RefSeq Size:</b>	3860
<b>RefSeq ORF:</b>	3369
<b>Synonyms:</b>	LCCS4; MYBPCC; MYBPCS; MYOTREM; ssMyBP-C
<b>Locus ID:</b>	4604
<b>UniProt ID:</b>	<a href="#">Q00872</a> , <a href="#">Q86TA8</a>
<b>Cytogenetics:</b>	12q23.2
<b>Summary:</b>	This gene encodes a member of the myosin-binding protein C family. Myosin-binding protein C family members are myosin-associated proteins found in the cross-bridge-bearing zone (C region) of A bands in striated muscle. The encoded protein is the slow skeletal muscle isoform of myosin-binding protein C and plays an important role in muscle contraction by recruiting muscle-type creatine kinase to myosin filaments. Mutations in this gene are associated with distal arthrogyriposis type I. Alternatively spliced transcript variants encoding multiple isoforms have been observed for this gene. [provided by RefSeq, Dec 2011]

### Product images:



Coomassie blue staining of purified MYBPC1 protein (Cat# [TP314776]). The protein was produced from HEK293T cells transfected with MYBPC1 cDNA clone (Cat# [RC214776]) using MegaTran 2.0 (Cat# [TT210002]).