

## Product datasheet for PH314764

### TBL1Y (NM\_134258) Human Mass Spec Standard

#### Product data:

Product Type:	Mass Spec Standards
Description:	TBL1Y MS Standard C13 and N15-labeled recombinant protein (NP_599020)
Species:	Human
Expression Host:	HEK293
Expression cDNA Clone or AA Sequence:	RC214764
Predicted MW:	56.7 kDa
Protein Sequence:	>RC214764 protein sequence Red=Cloning site Green=Tags(s)

MSITSDEVNFLVYRYLQESGFSAFTFGIESHISQSNINGTLVPPSALISILQKGLQYVEAEISINKDG  
TVFDSRPIESLSLIVAVIPDVVQMRQQAFGEKLTQQASAAATEASAMAKAATMTPAAISQQNPPKNREA  
TVNGEENGAHEINNHSKPMIDGDVEIPPKNATVLRGHESEVFCAWNVPVSDLLASGSGDSTARIWNLNE  
NSNGGSTQLVLRHCIREGGHDVPSNKDVTSLDWNSDGTLAMGSYDGFARIWTENGLASTLGQHKGP  
IFALKWNNKKNYVLSAGVDKTTIIWDAHTGEAKQQFPFHSAPALDQVQNNMTFASCSTDMCIHVCRLGCDH  
PVKTFQGHTEVNAIKWDPSGMLLASCSDDMTLKIWSMKQDACVHDLQAHSKEIYTIKWSPTGPATSNPN  
SSIMLASASFDSTVRLWDVEQGVCTHTLMKHQEPVYSVAFSPDGKYLASGSFDKYVHIWNTQSGSLVHSY  
QGTGGIFEVCWNARGDKVGASASDGSVCVLDL

TRTRPLEQKLISEEDLAANDILDYKDDDDKV

Tag:	C-Myc/DDK
Purity:	> 80% as determined by SDS-PAGE and Coomassie blue staining
Concentration:	>0.05 µg/µL as determined by microplate BCA method
Labeling Method:	Labeled with [U- <sup>13</sup> C <sub>6</sub> , <sup>15</sup> N <sub>4</sub> ]-L-Arginine and [U- <sup>13</sup> C <sub>6</sub> , <sup>15</sup> N <sub>2</sub> ]-L-Lysine
Buffer:	25 mM Tris-HCl, 100 mM glycine, pH 7.3
Storage:	Store at -80°C. Avoid repeated freeze-thaw cycles.
Stability:	Stable for 3 months from receipt of products under proper storage and handling conditions.
RefSeq:	<a href="#">NP_599020</a>
RefSeq Size:	2376
RefSeq ORF:	1566



[View online »](#)

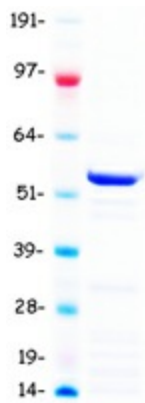
**Synonyms:** DFNY2; TBL1  
**Locus ID:** 90665  
**UniProt ID:** [Q9BQ87](#), [A0A024R189](#)  
**Cytogenetics:** Yp11.2

**Summary:** The protein encoded by this gene has sequence similarity with members of the WD40 repeat-containing protein family. The WD40 group is a large family of proteins, which appear to have a regulatory function. It is believed that the WD40 repeats mediate protein-protein interactions and members of the family are involved in signal transduction, RNA processing, gene regulation, vesicular trafficking, cytoskeletal assembly and may play a role in the control of cytotypic differentiation. This gene is highly similar to TBL1X gene in nucleotide sequence and protein sequence, but the TBL1X gene is located on chromosome X and this gene is on chromosome Y. This gene has three alternatively spliced transcript variants encoding the same protein. [provided by RefSeq, Jul 2008]

**Protein Families:** Transcription Factors

**Protein Pathways:** Wnt signaling pathway

### Product images:



Coomassie blue staining of purified TBL1Y protein (Cat# [TP314764]). The protein was produced from HEK293T cells transfected with TBL1Y cDNA clone (Cat# [RC214764]) using MegaTran 2.0 (Cat# [TT210002]).