

Product datasheet for PH314745

GOLPH2 (GOLM1) (NM_016548) Human Mass Spec Standard

Product data:

Product Type:	Mass Spec Standards
Description:	GOLM1 MS Standard C13 and N15-labeled recombinant protein (NP_057632)
Species:	Human
Expression Host:	HEK293
Expression cDNA Clone or AA Sequence:	RC214745
Predicted MW:	45.2 kDa
Protein Sequence:	>RC214745 representing NM_016548 Red=Cloning site Green=Tags(s)

MMGLGNGRRSMKSPPLVLAALVACIIIVLGFNYWIASRSVDLQTRIMELEGRVRRAAAERGAVELKKNEF
QGELEKQREQLDKIQSSHNFQLESVNKLYQDEKAVLVNNTTGERLIRVLQDQLKTLQRNYGRLQQDVLQ
FQKNQTNLERKFSYDLSQCINQMKEVKEQCEERIEEVTKKGNEAVASRDLSNNDQRQLQALSEPQRL
QAAGLPHTTEVPQKGKGNVLGNSKSQTPAPSSSEVLDSCRQVEKEETNEIQVVNEEPQRDLRPEPGREQVV
EDRPVGGRGFGGAGELGQTPQVQAALSVSQENPEMEGPERDQLVIPDGQEEEQEAAGEGRNQKLRGDD
YNMDENEAESSETDKQAALAGNDRNIDVFNVEDQKRDTINLLDQREKRNHTL

TRTRPLEQKLISEEDLAANDILDYKDDDDKV

Tag:	C-Myc/DDK
Purity:	> 80% as determined by SDS-PAGE and Coomassie blue staining
Concentration:	>0.05 µg/µL as determined by microplate BCA method
Labeling Method:	Labeled with [U- ¹³ C ₆ , ¹⁵ N ₄]-L-Arginine and [U- ¹³ C ₆ , ¹⁵ N ₂]-L-Lysine
Buffer:	25 mM Tris-HCl, 100 mM glycine, pH 7.3
Storage:	Store at -80°C. Avoid repeated freeze-thaw cycles.
Stability:	Stable for 3 months from receipt of products under proper storage and handling conditions.
RefSeq:	<u>NP_057632</u>
RefSeq Size:	3080
RefSeq ORF:	1203
Synonyms:	bA379P1.3; C9orf155; GOLPH2; GP73; HEL46; PSEC0257
Locus ID:	51280



[View online »](#)

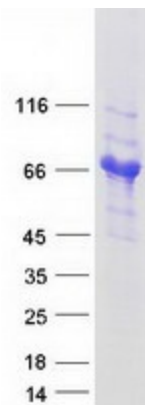
UniProt ID: [Q8NBJ4](#), [B3KKN9](#)

Cytogenetics: 9q21.33

Summary: The Golgi complex plays a key role in the sorting and modification of proteins exported from the endoplasmic reticulum. The protein encoded by this gene is a type II Golgi transmembrane protein. It processes proteins synthesized in the rough endoplasmic reticulum and assists in the transport of protein cargo through the Golgi apparatus. The expression of this gene has been observed to be upregulated in response to viral infection. Alternatively spliced transcript variants encoding the same protein have been described for this gene. [provided by RefSeq, Sep 2009]

Protein Families: Transmembrane

Product images:



Coomassie blue staining of purified GOLM1 protein (Cat# [TP314745]). The protein was produced from HEK293T cells transfected with GOLM1 cDNA clone (Cat# [RC214745]) using MegaTran 2.0 (Cat# [TT210002]).