

## Product datasheet for PH314703

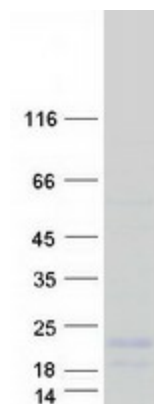
### LYPD2 (NM\_205545) Human Mass Spec Standard

#### Product data:

Product Type:	Mass Spec Standards
Description:	LYPD2 MS Standard C13 and N15-labeled recombinant protein (NP_991108)
Species:	Human
Expression Host:	HEK293
Expression cDNA Clone or AA Sequence:	RC214703
Predicted MW:	13.1 kDa
Protein Sequence:	<p>&gt;RC214703 protein sequence</p> <p>Red=Cloning site Green=Tags(s)</p> <p>MRGTQLVLLALVLAACGELAPALRCYVCPEPTGVSDCVTIATCTTNETMCKTTLYSREIVYPFQGDSTVT KSCASKCKPSDVGIGQTLPVSCNTELCNVDGAPALNSLHCGALTLLPLLRL</p> <p>TRTRPLEQKLISEEDLAANDILDYKDDDDKV</p>
Tag:	C-Myc/DDK
Purity:	> 80% as determined by SDS-PAGE and Coomassie blue staining
Concentration:	>0.05 µg/µL as determined by microplate BCA method
Labeling Method:	Labeled with [U- <sup>13</sup> C <sub>6</sub> , <sup>15</sup> N <sub>4</sub> ]-L-Arginine and [U- <sup>13</sup> C <sub>6</sub> , <sup>15</sup> N <sub>2</sub> ]-L-Lysine
Buffer:	25 mM Tris-HCl, 100 mM glycine, pH 7.3
Storage:	Store at -80°C. Avoid repeated freeze-thaw cycles.
Stability:	Stable for 3 months from receipt of products under proper storage and handling conditions.
RefSeq:	<a href="#">NP_991108</a>
RefSeq Size:	550
RefSeq ORF:	375
Synonyms:	LYPDC2; UNQ430
Locus ID:	137797
UniProt ID:	<a href="#">Q6UXB3</a> , <a href="#">F1T0L0</a>
Cytogenetics:	8q24.3


[View online »](#)

## Product images:



Coomassie blue staining of purified LYPD2 protein (Cat# [TP314703]). The protein was produced from HEK293T cells transfected with LYPD2 cDNA clone (Cat# [RC214703]) using MegaTran 2.0 (Cat# [TT210002]).