

Product datasheet for PH314610

RIC8 (RIC8B) (NM_018157) Human Mass Spec Standard

Product data:

Product Type:	Mass Spec Standards
Description:	RIC8B MS Standard C13 and N15-labeled recombinant protein (NP_060627)
Species:	Human
Expression Host:	HEK293
Expression cDNA Clone or AA Sequence:	RC214610
Predicted MW:	58.8 kDa
Protein Sequence:	>RC214610 representing NM_018157 Red=Cloning site Green=Tags(s)

MDEERALYIVRAGEAGAIERVLRDYSDKHRATFKFESTDEDKRRKLCGIFKVLIKDIPTTCQVSCLEVL
RILSRDKKVLVPVTTKENMQILLRLAKLNELDDSLKVFSEFPVIVESLKCLCNIVFNSQMAQQLSLELNL
AAKLCNLLRKCKDRKFINDIKCFDLRLLFLLSLLHTDIRSQLRYELQGLPLLQILESASFISIKWTDEYES
AIDHNGPPLSPQETDCAIEALKALFNVTVDSWKVHKESSHQFRVMAAVLRHCLLIVGPTEDKTEELHSN
AVNLLSNVPVSCLDVLICPLTHEETAQEATTLDELPSNKAETVTKNNTMVYNGMNMEAIHVLNLFME
KRIDKGSSYREGLTPVLSLLTECSRAHRNIRKFLKDQVLPPLRDVTVNRPEVGSTVRNKLVRMLTHVDLGV
KQIAAEFLFVLCCKERVDSLLKYTYGNAAGLLAARGLLAGGRGDNWYSEDEDTDEEYKNAKPKEELLKP
MGLKPDGTITPLEEALNQYSVIEETSSDTD

TRTRPLEQKLI SEEDLAANDILDYKDDDDKV

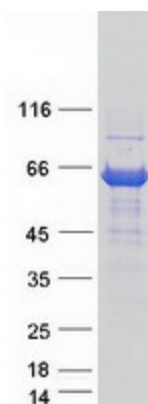
Tag:	C-Myc/DDK
Purity:	> 80% as determined by SDS-PAGE and Coomassie blue staining
Concentration:	>0.05 µg/µL as determined by microplate BCA method
Labeling Method:	Labeled with [U- ¹³ C ₆ , ¹⁵ N ₄]-L-Arginine and [U- ¹³ C ₆ , ¹⁵ N ₂]-L-Lysine
Buffer:	25 mM Tris-HCl, 100 mM glycine, pH 7.3
Storage:	Store at -80°C. Avoid repeated freeze-thaw cycles.
Stability:	Stable for 3 months from receipt of products under proper storage and handling conditions.
RefSeq:	<u>NP_060627</u>
RefSeq Size:	4989
RefSeq ORF:	1560



[View online »](#)

Synonyms:	hSyn; RIC8
Locus ID:	55188
UniProt ID:	Q9NVN3
Cytogenetics:	12q23.3
Summary:	Guanine nucleotide exchange factor (GEF), which can activate some, but not all, G-alpha proteins by exchanging bound GDP for free GTP. Able to potentiate G(olf)-alpha-dependent cAMP accumulation suggesting that it may be an important component for odorant signal transduction.[UniProtKB/Swiss-Prot Function]

Product images:



Coomassie blue staining of purified RIC8B protein (Cat# [TP314610]). The protein was produced from HEK293T cells transfected with RIC8B cDNA clone (Cat# [RC214610]) using MegaTran 2.0 (Cat# [TT210002]).