

Product datasheet for PH314598

NTH1 (NTHL1) (NM_002528) Human Mass Spec Standard

Product data:

Product Type:	Mass Spec Standards
Description:	NTHL1 MS Standard C13 and N15-labeled recombinant protein (NP_002519)
Species:	Human
Expression Host:	HEK293
Expression cDNA Clone or AA Sequence:	RC214598
Predicted MW:	34.2 kDa
Protein Sequence:	>RC214598 representing NM_002528 Red=Cloning site Green=Tags(s) MCSPQESGMTALSARMLTRSRSLGPGAGPRGCREEPGLRRREAAAEARKSHSPVKRPRKAQRLRVAYEG SDSEKGEAEPLKVPVWEPQDWQQQLVNIRAMRNKKDAPVDHLGTEHCYDSSAPPKVRRYQVLLSLMLSS QTKDQVTAGAMQRLRARGLTVDSILQTDATLGKLIYPVGFWRSKVKYIKQTSAILQQHYGGDIPASVAE LVALPGVGPMAHLAMAVAWGTVSGIAVDTHVHRIANRLRWTKKATKSPEETRAALEEWLPRELWHEING LLVGFQQTCLPVHPRCHAACLNQALCPAAQGL TRTRPLEQKLI SEEDLAANDILDYKDDDDKV
Tag:	C-Myc/DDK
Purity:	> 80% as determined by SDS-PAGE and Coomassie blue staining
Concentration:	>0.05 µg/µL as determined by microplate BCA method
Labeling Method:	Labeled with [U- ¹³ C ₆ , ¹⁵ N ₄]-L-Arginine and [U- ¹³ C ₆ , ¹⁵ N ₂]-L-Lysine
Buffer:	25 mM Tris-HCl, 100 mM glycine, pH 7.3
Storage:	Store at -80°C. Avoid repeated freeze-thaw cycles.
Stability:	Stable for 3 months from receipt of products under proper storage and handling conditions.
RefSeq:	<u>NP_002519</u>
RefSeq Size:	1097
RefSeq ORF:	936
Synonyms:	FAP3; hNTH1; NTH1; OCTS3
Locus ID:	4913



[View online »](#)

UniProt ID: [P78549](#), [E5KTI5](#)

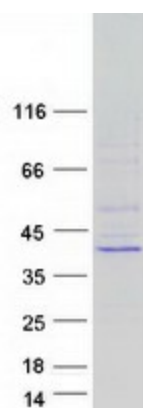
Cytogenetics: 16p13.3

Summary: The protein encoded by this gene is a DNA N-glycosylase of the endonuclease III family. Like a similar protein in *E. coli*, the encoded protein has DNA glycosylase activity on DNA substrates containing oxidized pyrimidine residues and has apurinic/aprimidinic lyase activity. [provided by RefSeq, Oct 2008]

Protein Families: Druggable Genome, Stem cell - Pluripotency

Protein Pathways: Base excision repair

Product images:



Coomassie blue staining of purified NTHL1 protein (Cat# [TP314598]). The protein was produced from HEK293T cells transfected with NTHL1 cDNA clone (Cat# [RC214598]) using MegaTran 2.0 (Cat# [TT210002]).