

Product datasheet for PH314594

Calcitonin (CALCA) (NM_001741) Human Mass Spec Standard

Product data:

Product Type:	Mass Spec Standards
Description:	CALCA MS Standard C13 and N15-labeled recombinant protein (NP_001732)
Species:	Human
Expression Host:	HEK293
Expression cDNA Clone or AA Sequence:	RC214594
Predicted MW:	15.5 kDa
Protein Sequence:	>RC214594 protein sequence Red=Cloning site Green=Tags(s) MGFQKFS PFLALSTLVLLQAGSLHAAPFRSALESSPADPATLSEDEARLLLAALVQDYVQMKASELEQEQ EREGSSLDSPRSKRCGNLSTCMLGTYTQDFNKFHTFPQTAIGVGAPGKKRDMSSDLERDHRPHVSM PQNA N TRTRPLEQKLI SEEDLAANDILDYKDDDDKV
Tag:	C-Myc/DDK
Purity:	> 80% as determined by SDS-PAGE and Coomassie blue staining
Concentration:	>0.05 µg/µL as determined by microplate BCA method
Labeling Method:	Labeled with [U- 13C6, 15N4]-L-Arginine and [U- 13C6, 15N2]-L-Lysine
Buffer:	25 mM Tris-HCl, 100 mM glycine, pH 7.3
Storage:	Store at -80°C. Avoid repeated freeze-thaw cycles.
Stability:	Stable for 3 months from receipt of products under proper storage and handling conditions.
RefSeq:	NP_001732
RefSeq Size:	792
RefSeq ORF:	423
Synonyms:	CALC1; CGRP; CGRP-alpha; CGRP-I; CGRP1; CT; KC; PCT
Locus ID:	796
UniProt ID:	P01258



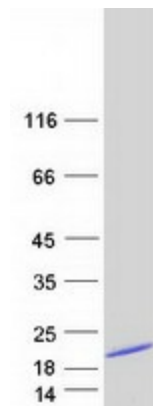
[View online »](#)

Cytogenetics: 11p15.2

Summary: This gene encodes the peptide hormones calcitonin, calcitonin gene-related peptide and katalcalcin by tissue-specific alternative RNA splicing of the gene transcripts and cleavage of inactive precursor proteins. Calcitonin is involved in calcium regulation and acts to regulate phosphorus metabolism. Calcitonin gene-related peptide functions as a vasodilator and as an antimicrobial peptide while katalcalcin is a calcium-lowering peptide. Multiple transcript variants encoding different isoforms have been found for this gene.[provided by RefSeq, Aug 2014]

Protein Families: Druggable Genome, Secreted Protein

Product images:



Coomassie blue staining of purified CALCA protein (Cat# [TP314594]). The protein was produced from HEK293T cells transfected with CALCA cDNA clone (Cat# [RC214594]) using MegaTran 2.0 (Cat# [TT210002]).