

Product datasheet for PH314592

KIBRA (WWC1) (NM_015238) Human Mass Spec Standard

Product data:

Product Type:	Mass Spec Standards
Description:	WWC1 MS Standard C13 and N15-labeled recombinant protein (NP_056053)
Species:	Human
Expression Host:	HEK293
Expression cDNA Clone or AA Sequence:	RC214592
Predicted MW:	125.1 kDa
Protein Sequence:	>RC214592 representing NM_015238 Red=Cloning site Green=Tags(s)

```
MPRPELPLPEGWEEARDFDGKVVYIDHTNRTTSWIDPRDRYTKPLTFADCISDELPLGWEEAYDPQVGDY
FIDHNTKTQIEDPRVQWRREQEHMLKDYLVAQEALSAQKEIYQVKQQRLELAQQEYQQLHAVWEHKLK
SQVSLVSGSSSSSKYDPEILKAEIATAKSRVNKLKREMVHLQHELQFKERGFQTLKIDKKMSDAQGSYK
LDEAQAVLRETKAIKKAITCGEKEKQDLIKSLAMLKDGFRTRDGRSHSDLWSSSSSLESSSFPLPKQYLDV
SSQTDISGSFGINSNNQLAEKVRRLRYEEAKRRIANLKIQLAKLDSEAWPGVLDSERDRLILINEKEEL
LKEMRFISPRKWTQGEVEQLEMARKRLEKDLQAARDTQSKALTERLKLNSKRNLVRELEEATRVATLH
SQLKSLSSMQSLSSGSSPGSLTSSRGSLVASSLDSSTSASFDTLDDYDPFEQLDSELQSKVEFLLEGAT
GFRPSGCITTIHEDEVAKTQKAEGGRLQALRSLSGTPKSMTSLSPRSSLSPPSPPCPLMADPLLAGDA
FLNSLEFEDPELSATLCELSLGSNAQERYRLEEPGTEGKQLGQAVNTAQCGGLKVACVSAVSDSESVAGD
SGVYEASVQRLGASEAAAFDSDESEAVGATRIQIALKYDEKNKQFAILI IQLSNL SALLQQQDQKVNIRV
AVLPCSESTTCLFRTRPLDASDTLVFNEVFWVMSYPALHQKTLRVDVCTTDRSHLEECLGGAQISLAEV
CRSGERSTRWYNLLSYKYLKQSRLEKPVGMAPASGPASTDAVSALLEQTAVELEKRQEGRSSTQTLED
SWRYEETSENEAVAEVEVEVEVEVEVEVEVEVEVEVEVEVEVEVEVEVEVEVEVEVEVEVEVEVEVEVE
TPSQGPFLRGSTIIRSKTFSPGPQSQYVCRNLNRSDDSSLSKKPPFVRNSLERRSVRMKRPSSVKSLRS
ERLIRTSLDLELDLQATRTWHSQLTQEISVLKELKEQLEQAKSHGEKELPQWLREDFRLLLRMLEKRM
DRAEHKQELQTDKMMRAAAKDVHRLRGQSCKEPPEVQSFREKMAFFTRPRMNIPALSADDY
```

TRTRPLEQKLISEEDLAANDILDYKDDDDKV

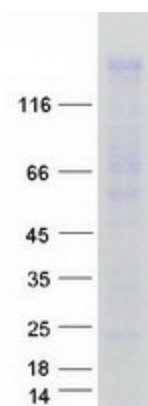
Tag:	C-Myc/DDK
Purity:	> 80% as determined by SDS-PAGE and Coomassie blue staining
Concentration:	>0.05 µg/µL as determined by microplate BCA method
Labeling Method:	Labeled with [U- ¹³ C ₆ , ¹⁵ N ₄]-L-Arginine and [U- ¹³ C ₆ , ¹⁵ N ₂]-L-Lysine
Buffer:	25 mM Tris-HCl, 100 mM glycine, pH 7.3



[View online >](#)

Storage:	Store at -80°C. Avoid repeated freeze-thaw cycles.
Stability:	Stable for 3 months from receipt of products under proper storage and handling conditions.
RefSeq:	NP_056053
RefSeq Size:	4171
RefSeq ORF:	3333
Synonyms:	HBEBP3; HBEBP36; KIBRA; MEMRYQTL; PPP1R168
Locus ID:	23286
UniProt ID:	Q8IX03
Cytogenetics:	5q34
Summary:	The protein encoded by this gene is a cytoplasmic phosphoprotein that interacts with PRKC-zeta and dynein light chain-1. Alleles of this gene have been found that enhance memory in some individuals. Three transcript variants encoding different isoforms have been found for this gene. [provided by RefSeq, Mar 2010]

Product images:



Coomassie blue staining of purified WWC1 protein (Cat# [TP314592]). The protein was produced from HEK293T cells transfected with WWC1 cDNA clone (Cat# [RC214592]) using MegaTran 2.0 (Cat# [TT210002]).