

Product datasheet for PH314563

Calpain 12 (CAPN12) (NM_144691) Human Mass Spec Standard

Product data:

Product Type:	Mass Spec Standards
Description:	CAPN12 MS Standard C13 and N15-labeled recombinant protein (NP_653292)
Species:	Human
Expression Host:	HEK293
Expression cDNA Clone or AA Sequence:	RC214563
Predicted MW:	80.9 kDa
Protein Sequence:	>RC214563 representing NM_144691 Red=Cloning site Green=Tags(s)

MASSSGRVTIQLVDEEAGVGAGRLQLFRGQSYEAIRAACLDGILFRDPYFPAGPDALGYDQLGPDSEKA
KGVKWMRPHEFCAEPKFCEDMSRTDVCQGS LGNCWFLAAAASLTLYPRLLRRVPPGQDFQHGYAGVFH
FQLWQFGRWMDVVDDRLPVREGKLMFVRSQRNEFWAPLLEKAYAKLHGSYEVMRGGHMNEAFVDFTGG
VGEVLYLRQNSMGLFSALRHALAKESLVGATALSDRGEYRTEEGLVKGHAYSITGTHKVF LGFTKVRLLR
LRNPWGCVEWTGAWSDCPRWDTLPTECRDALLVKKEDGEFWMELRDFLLHFDTVQICSLSPEVLGPSPE
GGGWHVHTFQGRWVRGFNSGGSQPNAETFWTNPQFRLTLLPDEEDDEDEEGPWGGWGAAGARGPARGGR
TPKCTVLLSLIQNRRLRAKGLTYLTVGFHFVQIPEELLGLWDSPPRSHALLPRLLRADRSPLSARRDVT
RRCCLRPGHYLVVPSTAHAGDEADFTLRVFSERRHTAVEIDDDVISADLQSLQGPYLPLELGLQLFQELA
GEEEELNASQLQALLSIALEPARAHTSTPREIGLRTCEQLLQCFGHGQSLALHHFQQLWGYLLEWQAI FN
KFDEDTSGTMNSYELRLALNAAGFHLNNQLTQTLTSRYRDSRLRVDFERFVSCVAHLTCIFCHCSQHLDG
GEGVICLTHRWMEVATFS

SGPTRRRLEQKLI SEEDLAANDILDYKDDDDKV

Tag:	C-Myc/DDK
Purity:	> 80% as determined by SDS-PAGE and Coomassie blue staining
Concentration:	>0.05 µg/µL as determined by microplate BCA method
Labeling Method:	Labeled with [U- ¹³ C ₆ , ¹⁵ N ₄]-L-Arginine and [U- ¹³ C ₆ , ¹⁵ N ₂]-L-Lysine
Buffer:	25 mM Tris-HCl, 100 mM glycine, pH 7.3
Storage:	Store at -80°C. Avoid repeated freeze-thaw cycles.
Stability:	Stable for 3 months from receipt of products under proper storage and handling conditions.
RefSeq:	NP_653292



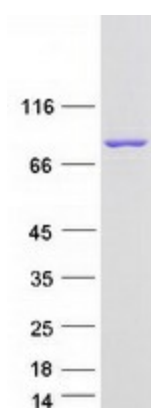
[View online »](#)

RefSeq Size: 3129
RefSeq ORF: 2157
Locus ID: 147968
UniProt ID: [Q6ZSI9](#)
Cytogenetics: 19q13.2

Summary: The calpains, calcium-activated neutral proteases, are nonlysosomal, intracellular cysteine proteases. The mammalian calpains include ubiquitous, stomach-specific, and muscle-specific proteins. The ubiquitous enzymes consist of heterodimers with distinct large, catalytic subunits associated with a common small, regulatory subunit. This gene encodes a member of the calpain large subunit family. [provided by RefSeq, Jun 2012]

Protein Families: Druggable Genome

Product images:



Coomassie blue staining of purified CAPN12 protein (Cat# [TP314563]). The protein was produced from HEK293T cells transfected with CAPN12 cDNA clone (Cat# [RC214563]) using MegaTran 2.0 (Cat# [TT210002]).