

Product datasheet for PH314556

CABP2 (NM_016366) Human Mass Spec Standard

Product data:

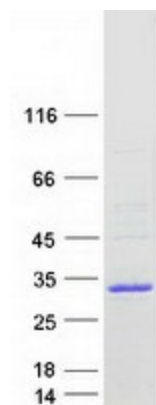
Product Type:	Mass Spec Standards
Description:	CABP2 MS Standard C13 and N15-labeled recombinant protein (NP_057450)
Species:	Human
Expression Host:	HEK293
Expression cDNA Clone or AA Sequence:	RC214556
Predicted MW:	24.3 kDa
Protein Sequence:	<p>>RC214556 representing NM_016366</p> <p>Red=Cloning site Green=Tags(s)</p> <p>MGNCAKRPWRRGPKDPLQWLGSPPRGSCSPSSSPKEQGDPAAGVQGYSVLNSLVGPACIFLRPSIAATQ LDRELRP EEIEELQVAFQEFDRDRDGYIGCRELGACMRTLGYMPTMELIEISQQISGGKVDFDFVELM GPKLLAETADMIGVREL RDAFREFD TNGDGRISVGELRAALKALLGERLSQREVDEILQDV DLNGDGLVD FEEFVRMSR</p> <p>TRTRPLEQKLISEEDLAANDILDYKDDDDKV</p>
Tag:	C-Myc/DDK
Purity:	> 80% as determined by SDS-PAGE and Coomassie blue staining
Concentration:	>0.05 µg/µL as determined by microplate BCA method
Labeling Method:	Labeled with [U- ¹³ C ₆ , ¹⁵ N ₄]-L-Arginine and [U- ¹³ C ₆ , ¹⁵ N ₂]-L-Lysine
Buffer:	25 mM Tris-HCl, 100 mM glycine, pH 7.3
Storage:	Store at -80°C. Avoid repeated freeze-thaw cycles.
Stability:	Stable for 3 months from receipt of products under proper storage and handling conditions.
RefSeq:	NP_057450
RefSeq Size:	986
RefSeq ORF:	660
Synonyms:	DFNB93
Locus ID:	51475
UniProt ID:	Q9NPB3


[View online »](#)

Cytogenetics: 11q13.2

Summary: This gene belongs to a subfamily of calcium binding proteins that share similarity to calmodulin. Like calmodulin, these family members can likely stimulate calmodulin-dependent kinase II and the protein phosphatase calcineurin. Calcium binding proteins are an important component of calcium mediated cellular signal transduction. Two transcript variants encoding different isoforms have been found for this gene. [provided by RefSeq, Jan 2016]

Product images:



Coomassie blue staining of purified CABP2 protein (Cat# [TP314556]). The protein was produced from HEK293T cells transfected with CABP2 cDNA clone (Cat# [RC214556]) using MegaTran 2.0 (Cat# [TT210002]).